

## Recombinant Mouse Cat Protein, His-tagged

Cat. No. Cat-632M Lot. No. (See product label)

### SPECIFICATION

<b>Product Overview</b>	Recombinant Mouse Cat Protein (Ser2-Leu527) with His tag was expressed in E. coli.
<b>Species</b>	Mouse
<b>Source</b>	E.coli
<b>ProteinLength</b>	Ser2-Leu527
<b>Description</b>	Enables aminoacylase activity and catalase activity. Acts upstream of or within several processes, including hydrogen peroxide catabolic process; positive regulation of phosphatidylinositol 3-kinase signaling; and regulation of DNA-binding transcription factor activity. Located in peroxisomal membrane. Is expressed in several structures, including alimentary system; early conceptus; heart; nervous system; and sensory organ. Human ortholog(s) of this gene implicated in several diseases, including acatalasia; eye disease (multiple); lung disease (multiple); osteonecrosis; and pseudoxanthoma elasticum. Orthologous to human CAT (catalase).
<b>Form</b>	Freeze-dried powder
<b>Molecular Mass</b>	Predicted Molecular Mass: 63.4 kDa; Accurate Molecular Mass: 42&63 kDa
<b>Purity</b>	> 90%
<b>Applications</b>	Positive Control; Immunogen; SDS-PAGE; WB.

 Tel: 1-631-559-9269 1-516-512-3133

 Email: [info@creative-biomart.com](mailto:info@creative-biomart.com)  Fax: 1-631-938-8127

 45-1 Ramsey Road, Shirley, NY 11967, USA

<b>Stability</b>	The thermal stability is described by the loss rate. The loss rate was determined by accelerated thermal degradation test, that is, incubate the protein at 37 centigrade for 48h, and no obvious degradation and precipitation were observed. The loss rate is less than 5% within the expiration date under appropriate storage condition.
<b>Storage</b>	Avoid repeated freeze/thaw cycles. Store at 2-8 centigrade for one month. Aliquot and store at -80 centigrade for 12 months.
<b>Storage Buffer</b>	20mM Tris, 150mM NaCl, pH8.0, containing 1mM EDTA, 1mM DTT, 0.01% SKL, 5% Trehalose and Proclin300.
<b>Reconstitution</b>	Reconstitute in 20mM Tris, 150mM NaCl (pH8.0) to a concentration of 0.1-1.0 mg/mL. Do not vortex.

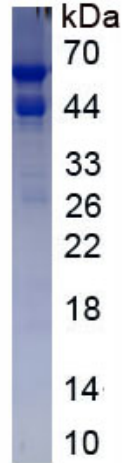
## GENE INFORMATION

<b>Gene Name</b>	<a href="#">Cat catalase [ Mus musculus (house mouse) ]</a>
<b>Official Symbol</b>	<a href="#">Cat</a>
<b>Synonyms</b>	CAT; catalase; catalase 1; Cas1; Cs-1; Cas-1; 2210418N07;
<b>Gene ID</b>	<a href="#">12359</a>
<b>mRNA Refseq</b>	<a href="#">NM_009804</a>
<b>Protein Refseq</b>	<a href="#">NP_033934</a>
<b>UniProt ID</b>	<a href="#">P24270</a>

 Tel: 1-631-559-9269 1-516-512-3133

 Email: [info@creative-biomart.com](mailto:info@creative-biomart.com)  Fax: 1-631-938-8127

 45-1 Ramsey Road, Shirley, NY 11967, USA



 Tel: 1-631-559-9269 1-516-512-3133

 Email: [info@creative-biomart.com](mailto:info@creative-biomart.com)  Fax: 1-631-938-8127

 45-1 Ramsey Road, Shirley, NY 11967, USA