

## Recombinant Rat Ccl11 protein, His & GST-tagged

Cat. No. Ccl11-596R Lot. No. (See product label)

### SPECIFICATION

<b>Product Overview</b>	Recombinant Rat Ccl11 (P97545) aa. (His24~Pro97) fused with N-terminal His & GST tag was produced in E. coli cells.
<b>Species</b>	Rat
<b>Source</b>	E.coli
<b>ProteinLength</b>	His24~Pro97
<b>Description</b>	Mouse homolog is an eosinophil chemoattractant.
<b>Form</b>	Freeze-dried powder
<b>Molecular Mass</b>	Predicted Molecular Mass: 40.8kDa
<b>Endotoxin</b>	<1.0EU per 1g (determined by the LAL method)
<b>Purity</b>	> 95%
<b>Characteristic</b>	The isoelectric point is 8.9.
<b>Applications</b>	SDS-PAGE; WB; ELISA; IP.
<b>Stability</b>	The thermal stability is described by the loss rate. The loss rate was determined by accelerated thermal degradation test, that is, incubate the protein at 37°C for 48h,

 Tel: 1-631-559-9269 1-516-512-3133

 Email: [info@creative-biomart.com](mailto:info@creative-biomart.com)  Fax: 1-631-938-8127

 45-1 Ramsey Road, Shirley, NY 11967, USA

and no obvious degradation and precipitation were observed. The loss rate is less than 5% within the expiration date under appropriate storage condition.

**Storage**

Avoid repeated freeze/thaw cycles. Store at 2-8°C for one month. Aliquot and store at -80°C for 12 months.

**Storage buffer**

PBS, pH7.4, containing 5% sucrose, 0.01% sarcosyl.

**Reconstitution**

Reconstitute in sterile PBS, pH7.2-pH7.4

## GENE INFORMATION

**Gene Name**

[Ccl11 C-C motif chemokine ligand 11 \[ Rattus norvegicus \(Norway rat\) \]](#)

**Official Symbol**

[Ccl11](#)

**Synonyms**

Ccl11; C-C motif chemokine ligand 11; Scya11; eotaxin; C-C motif chemokine 11; chemokine (C-C motif) ligand 11; eosinophil chemotactic protein; small inducible cytokine subfamily A11; small-inducible cytokine A11

**Gene ID**

[29397](#)

**mRNA Refseq**

[NM\\_019205.1](#)

**Protein Refseq**

[NP\\_062078.1](#)

**UniProt ID**

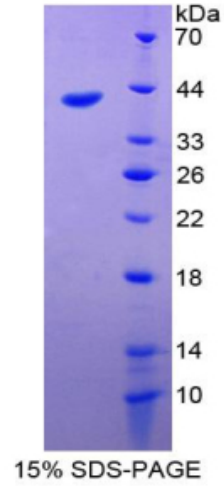
[P97545](#)

 Tel: 1-631-559-9269 1-516-512-3133

 Email: [info@creative-biomart.com](mailto:info@creative-biomart.com)  Fax: 1-631-938-8127

 45-1 Ramsey Road, Shirley, NY 11967, USA

**SDS-PAGE**



 Tel: 1-631-559-9269 1-516-512-3133

 Email: [info@creative-biomart.com](mailto:info@creative-biomart.com)  Fax: 1-631-938-8127

 45-1 Ramsey Road, Shirley, NY 11967, USA