

Recombinant Mouse Ccl11 protein

Cat. No. Ccl11-620M Lot. No. (See product label)

SPECIFICATION

| | |
|-------------------------|---|
| Product Overview | Recombinant Mouse Ccl11 protein was expressed in Escherichia coli. |
| Species | Mouse |
| Source | E.coli |
| ProteinLength | 74 |
| Description | Murine CCL11 is belonging to the CC chemokine family. CCL11 was first purified from bronchoalveolar lavage fluid of guinea pigs. It was a strong and specific eosinophil chemoattractant in vitro. It can directly chemotactic for eosinophils, but not for monocytes or neutrophils. Murine CCL11 is approximately 63 % identical at the amino acid level to human CCL11. In addition, CCL11 also shows about 60 % amino acid sequence identity to human MCPs. CCR3 has been identified to be a specific CCL11 receptor. |
| Form | Lyophilized from a 0.2µm filtered concentrated solution in PBS, pH 7.4. |
| Bio-activity | Fully biologically active when compared to standard. The biological activity determined by a chemotaxis bioassay using purified eosinophils is in a concentration range of 100-1000 ng/ml. |
| Molecular Mass | Approximately 8.4 kDa, a single non-glycosylated polypeptide chain containing 74 amino acids. |

 Tel: 1-631-559-9269 1-516-512-3133

 Email: info@creative-biomart.com  Fax: 1-631-938-8127

 45-1 Ramsey Road, Shirley, NY 11967, USA

| | |
|-----------------------|---|
| AA Sequence | HPGSIPTSCCFIMTSKKIPNTLLKSYKRITNNRCTLKAIVFKTRLGKEICADPKKKWVQ DATKHLDQKLQTPKP |
| Endotoxin | Less than 1 EU/μg of rMuEotaxin/CCL11 as determined by LAL method. |
| Purity | >96% by SDS-PAGE and HPLC analysis. |
| Storage | Use a manual defrost freezer and avoid repeated freeze-thaw cycles. 12 months from date of receipt, -20 to -70 centigrade as supplied. 1 month, 2 to 8 centigrade under sterile conditions after reconstitution. 3 months, -20 to -70 centigrade under sterile conditions after reconstitution. |
| Reconstitution | We recommend that this vial be briefly centrifuged prior to opening to bring the contents to the bottom. Reconstitute in sterile distilled water or aqueous buffer containing 0.1 % BSA to a concentration of 0.1-1.0 mg/mL. Stock solutions should be apportioned into working aliquots and stored at ≤-20 centigrade. Further dilutions should be made in appropriate buffered solutions. |

GENE INFORMATION

| | |
|------------------------|---|
| Gene Name | Ccl11 |
| Official Symbol | Ccl11 |
| Synonyms | CCL11; chemokine (C-C motif) ligand 11; eotaxin; C-C motif chemokine 11; small inducible cytokine A11; small-inducible cytokine A11; eosinophil chemotactic protein; small chemokine (C-C motif) ligand 11; Scya11; |
| Gene ID | 20292 |
| mRNA Refseq | NM_011330 |

 Tel: 1-631-559-9269 1-516-512-3133

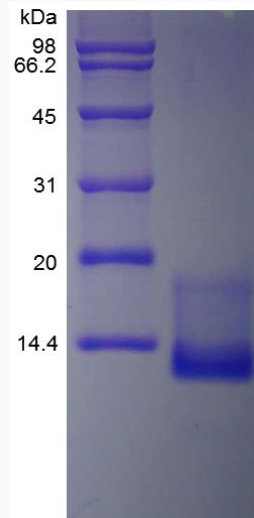
 Email: info@creative-biomart.com  Fax: 1-631-938-8127

 45-1 Ramsey Road, Shirley, NY 11967, USA

Protein Refseq NP_035460

UniProt ID P48298

SDS-PAGE of Ccl11-620M



 Tel: 1-631-559-9269 1-516-512-3133

 Email: info@creative-biomart.com  Fax: 1-631-938-8127

 45-1 Ramsey Road, Shirley, NY 11967, USA