

Recombinant Rat Ccl17 protein

Cat. No. Ccl17-1346R **Lot. No.** (See product label)

SPECIFICATION

Product Overview	Recombinant Rat Ccl17 protein was expressed in Escherichia coli.
Species	Rat
Source	E.coli
ProteinLength	70
Description	CCL17 also known as thymus and activation-related chemokine (TARC) is encoded by the CCL17 gene located on the chromosome 16. It is expressed by thymus cells constitutively and phytohemagglutinin-stimulated peripheral blood mononuclear cells transiently. CCL17 signals through the chemokine receptors CCR4 and CCR8 and displays chemotactic activity for T lymphocytes and some other leukocytes. It plays an important role in skin diseases such as atopic dermatitis, bullous pemphigoid and mycosis fungoides. CCL17 has approximately 24 – 29 % amino acid sequence identity with RANTES, MIP-1 α , MIP-1 β , MCP-1, MCP-2, MCP-3 and I-309.
Form	Lyophilized from a 0.2 μ m filtered concentrated solution in PBS, pH 7.4.
Bio-activity	Fully biologically active when compared to standard. The biological activity determined by a chemotaxis bioassay using human T-lymphocytes is in a concentration range of 1.0-10 ng/ml.
Molecular Mass	Approximately 8.1 kDa, a single non-glycosylated polypeptide chain containing 70 amino acids.

 Tel: 1-631-559-9269 1-516-512-3133

 Email: info@creative-biomart.com  Fax: 1-631-938-8127

 45-1 Ramsey Road, Shirley, NY 11967, USA

AA Sequence	ARATNVGRECCLDYFKGAIPRKLVTWFRTSVECPKDAIVFETVQGRLICTDPKDKHV KKAIRHLKNQRL
Endotoxin	Less than 0.1 EU/μg of r rRtTARC/CCL17 as determined by LAL method.
Purity	>97% by SDS-PAGE and HPLC analysis.
Storage	Use a manual defrost freezer and avoid repeated freeze-thaw cycles. 12 months from date of receipt, -20 to -70 centigrade as supplied. 1 month, 2 to 8 centigrade under sterile conditions after reconstitution. 3 months, -20 to -70 centigrade under sterile conditions after reconstitution.
Reconstitution	We recommend that this vial be briefly centrifuged prior to opening to bring the contents to the bottom. Reconstitute in sterile distilled water or aqueous buffer containing 0.1 % BSA to a concentration of 0.1-1.0 mg/mL. Stock solutions should be apportioned into working aliquots and stored at ≤-20 centigrade. Further dilutions should be made in appropriate buffered solutions.

GENE INFORMATION

Gene Name	Ccl17
Official Symbol	Ccl17
Synonyms	CCL17; chemokine (C-C motif) ligand 17; C-C motif chemokine 17; small inducible cytokine subfamily A (Cys-Cys), member 17; Tarc; Scya17;
Gene ID	117518
mRNA Refseq	NM_057151

 Tel: 1-631-559-9269 1-516-512-3133

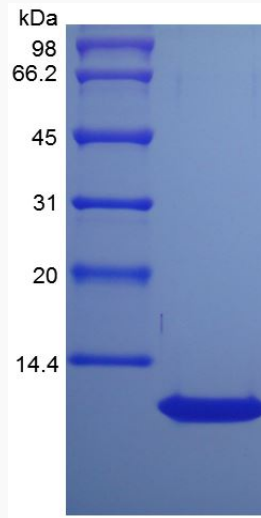
 Email: info@creative-biomart.com  Fax: 1-631-938-8127

 45-1 Ramsey Road, Shirley, NY 11967, USA

Protein Refseq NP_476492

UniProt ID Q9ERE0

SDS-PAGE of Ccl17-1346R



 Tel: 1-631-559-9269 1-516-512-3133

 Email: info@creative-biomart.com  Fax: 1-631-938-8127

 45-1 Ramsey Road, Shirley, NY 11967, USA