

## Recombinant Mouse Chemokine(C-C motif) Ligand 17

Cat. No. Ccl17-625M Lot. No. (See product label)

### SPECIFICATION

<b>Product Overview</b>	A DNA sequence encoding the mouse Ccl17 (Met 1-Pro 93) was expressed and purified. It consists of 73 amino acids and has a predicted molecular mass of 8.2 kDa.
<b>Species</b>	Mouse
<b>Source</b>	Human Cells
<b>ProteinLength</b>	73aa
<b>Description</b>	Ccl17 is a secreted protein which belongs to the intercrine beta (chemokine CC) family. Chemokines are known to regulate the steady-state and inflammatory migration of cutaneous dendritic cells (DCs). The beta-chemokine Ccl17, a ligand of CCR4, is inducibly expressed in a subset of DCs and is strongly up-regulated in atopic diseases.
<b>Predicted N Terminal</b>	Ala 21
<b>Form</b>	Lyophilized from 0.2µm filtered solution of PBS, pH7.5. Normally 5 % - 8 % trehalose and mannitol are added as protectants before lyophilization. Specific concentrations are included in the hardcopy of COA.
<b>Molecular Mass</b>	The secreted pro form of recombinant mouse Ccl17 consists of 73 amino acids and has a predicted molecular mass of 8.2KDa as estimated in SDS-PAGE under reducing conditions.

 Tel: 1-631-559-9269 1-516-512-3133

 Email: [info@creative-biomart.com](mailto:info@creative-biomart.com)  Fax: 1-631-938-8127

 45-1 Ramsey Road, Shirley, NY 11967, USA

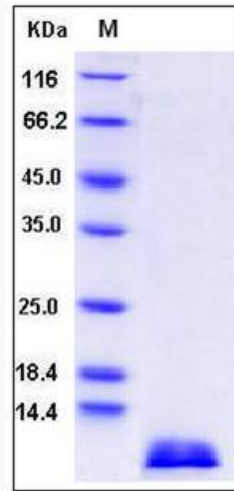
<b>Endotoxin</b>	1.0 eu/μg of the protein as determined by the lal
<b>Purity</b>	>98 % as determined by SDS-PAGE.
<b>Stability</b>	Samples are stable for up to twelve months from date of receipt at -70 °C.
<b>Storage</b>	Store it under sterile conditions at -70°C. It is recommended that the protein be aliquoted for optimal storage. Avoid repeated freeze-thaw cycles.
<b>GENE INFORMATION</b>	
<b>Gene Name</b>	<a href="#">Ccl17 chemokine (C-C motif) ligand 17 [ Mus musculus ]</a>
<b>Official Symbol</b>	Ccl17
<b>Synonyms</b>	CCL17; chemokine (C-C motif) ligand 17; small inducible cytokine subfamily A17; Tarc; Abcd-2; Scya17; Scya17l;
<b>Gene ID</b>	<a href="#">20295</a>
<b>mRNA Refseq</b>	<a href="#">NM_011332</a>
<b>Protein Refseq</b>	<a href="#">NP_035462</a>
<b>Pathway</b>	Chemokine signaling pathway, organism-specific biosystem; Chemokine signaling pathway, conserved biosystem; Cytokine-cytokine receptor interaction, organism-specific biosystem; Cytokine-cytokine receptor interaction, conserved biosystem;
<b>Function</b>	CCR4 chemokine receptor binding; chemokine activity; cytokine activity;

 Tel: 1-631-559-9269 1-516-512-3133

 Email: [info@creative-biomart.com](mailto:info@creative-biomart.com)  Fax: 1-631-938-8127

 45-1 Ramsey Road, Shirley, NY 11967, USA

Ccl17 protein



 Tel: 1-631-559-9269 1-516-512-3133

 Email: [info@creative-biomart.com](mailto:info@creative-biomart.com)  Fax: 1-631-938-8127

 45-1 Ramsey Road, Shirley, NY 11967, USA