

Recombinant Rat Ccl17 protein, His-tagged

Cat. No. Ccl17-7133R **Lot. No.** (See product label)

SPECIFICATION

Product Overview	Recombinant Rat Ccl17 aa. (Thr27~Leu93 (Accession # Q9ERE0)) fused with N-terminal His tag was produced in E. coli cells.
Species	Rat
Source	E.coli
ProteinLength	Thr27~Leu93
Description	A thymus and activation-regulated chemokine.
Form	Freeze-dried powder
Molecular Mass	11kDa as determined by SDS-PAGE reducing conditions
Endotoxin	<1.0EU per 1ug (determined by the LAL method)
Purity	>95%
Characteristic	The isoelectric point is 9.5.
Applications	SDS-PAGE; WB; ELISA; IP.
Stability	The thermal stability is described by the loss rate of the target protein. The loss rate was determined by accelerated thermal degradation test, that is, incubate the protein

 Tel: 1-631-559-9269 1-516-512-3133

 Email: info@creative-biomart.com  Fax: 1-631-938-8127

 45-1 Ramsey Road, Shirley, NY 11967, USA

at 37°C for 48h, and no obvious degradation and precipitation were observed. (Referring from China Biological Products Standard, which was calculated by the Arrhenius equation.) The loss of this protein is less than 5% within the expiration date under appropriate storage condition.

Storage

Avoid repeated freeze/thaw cycles. Store at 2-8°C for one month. Aliquot and store at -80°C for 12 months.

Storage buffer

Supplied as lyophilized form in PBS, pH7.4, containing 5% sucrose, 0.01% sarcosyl.

Reconstitution

Reconstitute in sterile PBS, pH7.2-pH7.4.

GENE INFORMATION

Gene Name

[Ccl17 C-C motif chemokine ligand 17 \[Rattus norvegicus \(Norway rat\) \]](#)

Official Symbol

[Ccl17](#)

Synonyms

Ccl17; C-C motif chemokine ligand 17; Tarc; Scya17; C-C motif chemokine 17; chemokine (C-C motif) ligand 17; small inducible cytokine subfamily A (Cys-Cys), member 17

Gene ID

[117518](#)

mRNA Refseq

[NM_057151.1](#)

Protein Refseq

[NP_476492.1](#)

UniProt ID

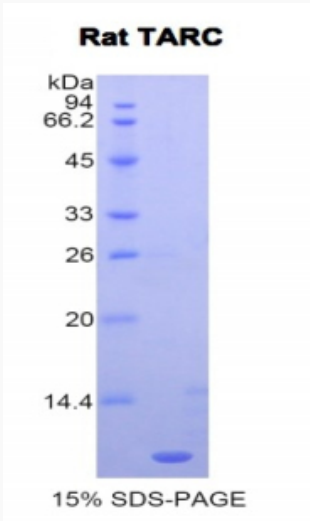
[Q9ERE0](#)

 Tel: 1-631-559-9269 1-516-512-3133

 Email: info@creative-biomart.com  Fax: 1-631-938-8127

 45-1 Ramsey Road, Shirley, NY 11967, USA

SDS-PAGE



 Tel: 1-631-559-9269 1-516-512-3133

 Email: info@creative-biomart.com  Fax: 1-631-938-8127

 45-1 Ramsey Road, Shirley, NY 11967, USA