

Recombinant Rat Ccl2 protein, His-tagged

Cat. No. Ccl2-02R **Lot. No.** (See product label)

SPECIFICATION

Product Overview	Recombinant rat CCL2/JE/MCP-1 protein (24-148aa), fused to His-tag at C-terminus, was expressed in insect cell and purified by using conventional chromatography techniques.
Species	Rat
Source	Insect cells
ProteinLength	24-148 a.a.
Description	A monocyte chemoattractant protein.
Form	Liquid
Molecular Mass	15.1 kDa
AA Sequence	QPDVAVNAPLTCCYSFTGKMIPMSRLENYKRITSSRCPKEAVVFVTKLKREICADPNK EWWQKYIRKLDQNQVRSETTVFYKIASLRLTSAPLNVNLTHKSEANASTLFFSTTTSSST SVEVTSMTEN
Endotoxin	< 1 EU/μg of protein (determined by LAL method)
Purity	> 90% by SDS-PAGE
Applications	SDS-PAGE

 Tel: 1-631-559-9269 1-516-512-3133

 Email: info@creative-biomart.com  Fax: 1-631-938-8127

 45-1 Ramsey Road, Shirley, NY 11967, USA

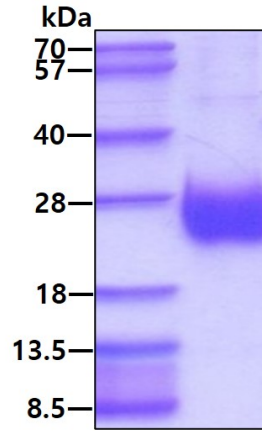
Storage	Can be stored at +2 to +8 centigrade for 1 week. For long term storage, aliquot and store at -20 to -80 centigrade. Avoid repeated freezing and thawing cycles.
Concentration	0.5 mg/mL
Storage Buffer	In Phosphate-Buffered Saline (pH 7.4) containing 10% glycerol
GENE INFORMATION	
Gene Name	Ccl2 C-C motif chemokine ligand 2 [<i>Rattus norvegicus</i> (Norway rat)]
Official Symbol	Ccl2
Synonyms	Ccl2; C-C motif chemokine ligand 2; MCP-1; Scya2; Sigje; C-C motif chemokine 2; chemokine (C-C motif) ligand 2; immediate-early serum-responsive JE protein; immediate-early serum-responsive protein JE; monocyte chemoattractant protein 1; monocyte chemotactic protein 1; small inducible cytokine A2; small inducible gene JE
Gene ID	24770
mRNA Refseq	NM_031530
Protein Refseq	NP_113718
UniProt ID	P14844

 Tel: 1-631-559-9269 1-516-512-3133

 Email: info@creative-biomart.com  Fax: 1-631-938-8127

 45-1 Ramsey Road, Shirley, NY 11967, USA

SDS-PAGE



3 μ g by SDS-PAGE under reducing condition and visualized by coomassie blue stain.

 Tel: 1-631-559-9269 1-516-512-3133

 Email: info@creative-biomart.com  Fax: 1-631-938-8127

 45-1 Ramsey Road, Shirley, NY 11967, USA