

Recombinant Rat Ccl2 Protein, His-tagged

Cat. No. Ccl2-1101R **Lot. No.** (See product label)

SPECIFICATION

Product Overview	Recombinant Rat Ccl2 Protein (Gln24-Asn148) with His tag was expressed in 293F.
Species	Rat
Source	HEK293
ProteinLength	Gln24-Asn148
Description	Enables chemokine activity and heparin binding activity. Involved in several processes, including cellular response to cytokine stimulus; cellular response to lipid; and leukocyte migration. Located in several cellular components, including perikaryon; perinuclear region of cytoplasm; and rough endoplasmic reticulum. Colocalizes with C-fiber. Used to study several diseases, including artery disease (multiple); diabetic angiopathy; interstitial lung disease (multiple); kidney disease (multiple); and pancreatitis (multiple). Biomarker of several diseases, including artery disease (multiple); cerebrovascular disease (multiple); lung disease (multiple); non-alcoholic fatty liver disease (multiple); and pancreatitis (multiple). Human ortholog(s) of this gene implicated in several diseases, including Henoch-Schoenlein purpura; aggressive periodontitis; autoimmune disease (multiple); gastrointestinal system cancer (multiple); and tuberculosis (multiple). Orthologous to human CCL2 (C-C motif chemokine ligand 2).
Form	Freeze-dried powder
Molecular Mass	Predicted Molecular Mass: 15.7 kDa; Accurate Molecular Mass: 33-38 kDa

 Tel: 1-631-559-9269 1-516-512-3133

 Email: info@creative-biomart.com  Fax: 1-631-938-8127

 45-1 Ramsey Road, Shirley, NY 11967, USA

Purity	> 90%
Applications	Positive Control; Immunogen; SDS-PAGE; WB.
Stability	The thermal stability is described by the loss rate. The loss rate was determined by accelerated thermal degradation test, that is, incubate the protein at 37 centigrade for 48h, and no obvious degradation and precipitation were observed. The loss rate is less than 5% within the expiration date under appropriate storage condition.
Storage	Avoid repeated freeze/thaw cycles. Store at 2-8 centigrade for one month. Aliquot and store at -80 centigrade for 12 months.
Storage Buffer	20mM Tris, 150mM NaCl, pH8.0, containing 1mM EDTA, 1mM DTT, 0.01% SKL, 5% Trehalose and Proclin300.
Reconstitution	Reconstitute in 20mM Tris, 150mM NaCl (pH8.0) to a concentration of 0.1-1.0 mg/mL. Do not vortex.

GENE INFORMATION

Gene Name	Ccl2 C-C motif chemokine ligand 2 [<i>Rattus norvegicus</i> (Norway rat)]
Official Symbol	Ccl2
Synonyms	Ccl2; C-C motif chemokine ligand 2; MCP-1; Scya2; Sigje; C-C motif chemokine 2; chemokine (C-C motif) ligand 2; immediate-early serum-responsive JE protein; immediate-early serum-responsive protein JE; monocyte chemoattractant protein 1; monocyte chemotactic protein 1; small inducible cytokine A2; small inducible gene JE
Gene ID	24770

 Tel: 1-631-559-9269 1-516-512-3133

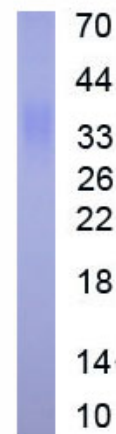
 Email: info@creative-biomart.com  Fax: 1-631-938-8127

 45-1 Ramsey Road, Shirley, NY 11967, USA

mRNA Refseq [NM_031530](#)

Protein Refseq [NP_113718](#)

UniProt ID [P14844](#)



 Tel: 1-631-559-9269 1-516-512-3133

 Email: info@creative-biomart.com  Fax: 1-631-938-8127

 45-1 Ramsey Road, Shirley, NY 11967, USA