

# Recombinant Mouse C motif chemokine ligand 2 Protein, Tag Free

Cat. No. Ccl2-168M Lot. No. (See product label)

## SPECIFICATION

### Product Overview

Recombinant mouse CCL2 protein (P10148) (Gln 24-Asn 148) without tag was expressed in HEK293.

### Species

Mouse

### Source

HEK293

### Protein Length

24-148aa

### Description

This gene is one of several cytokine genes clustered on the q-arm of chromosome 17. Chemokines are a superfamily of secreted proteins involved in immunoregulatory and inflammatory processes. The superfamily is divided into four subfamilies based on the arrangement of N-terminal cysteine residues of the mature peptide. This chemokine is a member of the CC subfamily which is characterized by two adjacent cysteine residues. This cytokine displays chemotactic activity for monocytes and basophils but not for neutrophils or eosinophils. It has been implicated in the pathogenesis of diseases characterized by monocytic infiltrates, like psoriasis, rheumatoid arthritis and atherosclerosis. It binds to chemokine receptors CCR2 and CCR4. Elevated expression of the encoded protein is associated with severe acute respiratory syndrome coronavirus 2 (SARS-CoV-2) infection.

### Tag

Non

### Molecular Mass

14.2 kDa

 Tel: 1-631-559-9269 1-516-512-3133

 Email: [info@creative-biomart.com](mailto:info@creative-biomart.com)  Fax: 1-631-938-8127

 45-1 Ramsey Road, Shirley, NY 11967, USA

<b>Endotoxin</b>	Less than 1.0 EU/μg by the LAL method.
<b>Purity</b>	>95% as determined by SDS-PAGE.
<b>Storage</b>	Please avoid repeated freeze-thaw cycles. Samples are stable for up to twelve months from date of receipt at -20 to -80 centigrade. It is recommended that aliquot the reconstituted solution to minimize freeze-thaw cycles.
<b>Storage Buffer</b>	Lyophilized from a 0.2 μm filtered solution of PBS, pH7.4, 5% Trehalose, 5% mannitol.
<b>Reconstitution</b>	Reconstitute at 250 μg/mL in sterile water.

## GENE INFORMATION

<b>Gene Name</b>	<a href="#">Ccl2 C-C motif chemokine ligand 2 [ Mus musculus (house mouse) ]</a>
<b>Official Symbol</b>	<a href="#">Ccl2</a>
<b>Synonyms</b>	CCL2; chemokine (C-C motif) ligand 2; C-C motif chemokine 2; small inducible cytokine A2; small-inducible cytokine A2; monocyte chemotactic protein 1; monocyte chemoattractant protein 1; monocyte chemoattractant protein-1; platelet-derived growth factor-inducible protein JE; JE; HC11; MCAF; MCP1; MCP-1; Scya2; Sigje; SMC-CF; AI323594;
<b>Gene ID</b>	<a href="#">20296</a>
<b>mRNA Refseq</b>	<a href="#">NM_011333</a>
<b>Protein Refseq</b>	<a href="#">NP_035463</a>

 Tel: 1-631-559-9269 1-516-512-3133

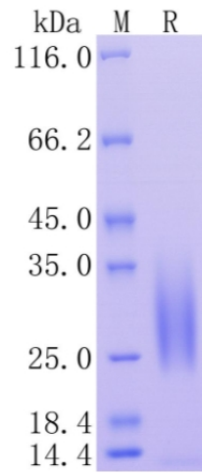
 Email: [info@creative-biomart.com](mailto:info@creative-biomart.com)  Fax: 1-631-938-8127

 45-1 Ramsey Road, Shirley, NY 11967, USA

UniProt ID

P10148

Protein on SDS-  
PAGE under  
reducing (R)  
condition.



 Tel: 1-631-559-9269 1-516-512-3133

 Email: [info@creative-biomart.com](mailto:info@creative-biomart.com)  Fax: 1-631-938-8127

 45-1 Ramsey Road, Shirley, NY 11967, USA