

## Active Recombinant Mouse Ccl2 Protein

**Cat. No.** Ccl2-2030M    **Lot. No.** (See product label)

### SPECIFICATION

<b>Product Overview</b>	Purified recombinant protein of Mouse chemokine (C-C motif) ligand 2 (Ccl2 / MCP-1) without tag was expressed in HEK293.
<b>Species</b>	Mouse
<b>Source</b>	HEK293
<b>ProteinLength</b>	Gln24-Arg96
<b>Description</b>	<p>This gene is one of several cytokine genes clustered on chromosome 11. Chemokines are a superfamily of secreted proteins involved in immunoregulatory and inflammatory processes. The superfamily is divided into four subfamilies based on the arrangement of N-terminal cysteine residues of the mature peptide. This chemokine is a member of the CC subfamily which is characterized by two adjacent cysteine residues. This cytokine displays chemotactic activity for monocytes and memory T cells but not for neutrophils. The human ortholog has been implicated in the pathogenesis of diseases characterized by monocytic infiltrates, such as psoriasis, rheumatoid arthritis, and atherosclerosis.</p>
<b>Bio-activity</b>	The ED50 is 8 -15 ng/mL, corresponding to a specific activity of 0.6 - 1.25 x 10 <sup>5</sup> units/mg, determined by the dose dependent chemoattraction of THP-1 cells.
<b>Molecular Mass</b>	8.5 kDa
<b>Endotoxin</b>	Less than 0.01 ng/μg protein as determined by the LAL method

 Tel: 1-631-559-9269    1-516-512-3133

 Email: [info@creative-biomart.com](mailto:info@creative-biomart.com)     Fax: 1-631-938-8127

 45-1 Ramsey Road, Shirley, NY 11967, USA

<b>Purity</b>	> 98%, as determined by Coomassie stained SDS-PAGE.
<b>Stability</b>	Unopened vial can be stored between 2 and 8 centigrade for up to 2 weeks, at -20 centigrade for up to 6 months, or at -70 centigrade or below until the expiration date. Aliquots can be stored between 2 and 8 centigrade for up to one week and stored at -20 centigrade or colder for up to 3 months. Avoid repeated freeze/thaw cycles.
<b>Storage</b>	Store at -80 centigrade.
<b>Concentration</b>	Protein formulated and vialled at >50 µg/mL in specified buffer
<b>Storage Buffer</b>	1 x PBS

## GENE INFORMATION

<b>Gene Name</b>	Ccl2 chemokine (C-C motif) ligand 2 [ <i>Mus musculus</i> (house mouse) ]
<b>Official Symbol</b>	Ccl2
<b>Synonyms</b>	Ccl2; chemokine (C-C motif) ligand 2; JE; MCA; MCP; Scy; Sig; HC11; MCAF; MCP-; MCP1; MCP-1; SMC-C; Scya2; Sigje; SMC-CF; AI323594; C-C motif chemokine 2; monocyte chemoattractant protein 1; monocyte chemotactic protein 1; platelet-derived growth factor-inducible protein JE; small-inducible cytokine A2
<b>Gene ID</b>	20296
<b>mRNA Refseq</b>	NM_011333
<b>Protein Refseq</b>	NP_035463
<b>UniProt ID</b>	P10148

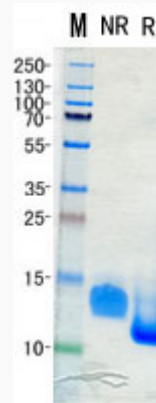
 Tel: 1-631-559-9269 1-516-512-3133

 Email: [info@creative-biomart.com](mailto:info@creative-biomart.com)  Fax: 1-631-938-8127

 45-1 Ramsey Road, Shirley, NY 11967, USA



SDS-PAGE



Tel: 1-631-559-9269 1-516-512-3133

Email: [info@creative-biomart.com](mailto:info@creative-biomart.com) Fax: 1-631-938-8127

45-1 Ramsey Road, Shirley, NY 11967, USA