

Active Recombinant Rat Chemokine (C-C motif) Ligand 2

Cat. No. Ccl2-469R **Lot. No.** (See product label)

SPECIFICATION

Product Overview	Recombinant Rat Ccl2 protein was expressed in Murine myeloma cell line. Gln24-Asn148.
Species	Rat
Source	Mammalian Cells
Protein Length	24-148 a.a.
Description	Rat Ccl2 is a member of the β (CC) subfamily of chemokines that is a chemoattractant for monocytes and basophils but not eosinophils or neutrophils. Rat Ccl2 is secreted as a 14 kDa glycoprotein monomer but noncovalent dimers probably occur. The first five amino acids of the mature protein are essential for activity; deletion of the N-terminal glutamine, which is pyrrolidone carboxylic acid modified, dramatically decreases activity on basophils and, surprisingly, stimulates eosinophil chemotaxis.
Form	Lyophilized from a 0.2 μ m filtered solution in PBS with Trehalose and with BSA as a carrier protein.
N-terminal Sequence	No results obtained: Gln24 predicted
Molecular Weight	14 kDa
Activity	Measured by its ability to chemoattract human CCR2A transfected BaF3 mouse proB

 Tel: 1-631-559-9269 1-516-512-3133

 Email: info@creative-biomart.com  Fax: 1-631-938-8127

 45-1 Ramsey Road, Shirley, NY 11967, USA

cells. The ED50 for this effect is typically 30-150 ng/mL.

Endotoxin Level <1.0 EU per 1 µg of the protein by the LAL method.

Purity >90%, by SDS-PAGE under reducing conditions and visualized by silver stain.

Reconstitution Reconstitute at 10 µg/mL in sterile PBS that containing at least 0.1% human or bovine serum albumin.

Storage Use a manual defrost freezer and avoid repeated freeze-thaw cycles. 12 months from date of receipt, -20 to -70°C as supplied. 1 month, 2 to 8°C under sterile conditions after reconstitution. 3 months, -20 to -70°C under sterile conditions after reconstitution.

GENE INFORMATION

Gene Name [Ccl2 chemokine\(C-C motif\) ligand 2 \[Rattus norvegicus \]](#)

Official Symbol [Ccl2](#)

Synonyms Ccl2; chemokine(C-C motif) ligand 2; MCP-1; Scya2; Sigje; C-C motif chemokine 2; small inducible gene JE; small inducible cytokine A2; small-inducible cytokine A2; monocyte chemoattractant protein 1; monocyte chemoattractant protein 1; monocyte chemoattractant protein-1; immediate-early serum-responsive JE protein; immediate-early serum-responsive protein JE; Je; Mcp1

Gene ID [24770](#)

mRNA Refseq [NM_031530](#)

Protein Refseq [NP_113718](#)

 Tel: 1-631-559-9269 1-516-512-3133

 Email: info@creative-biomart.com  Fax: 1-631-938-8127

 45-1 Ramsey Road, Shirley, NY 11967, USA

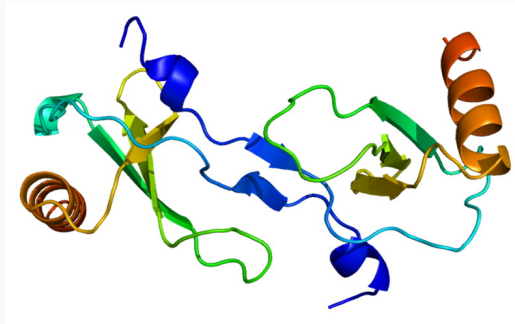
UniProt ID P14844

Chromosome Location 10q26

Pathway Chemokine signaling pat

Function CCR2 chemokine receptorbinding; G-protein coupled receptor binding; chemokine activity; heparin binding

PDB renderingbased on 1dok.



 Tel: 1-631-559-9269 1-516-512-3133

 Email: info@creative-biomart.com  Fax: 1-631-938-8127

 45-1 Ramsey Road, Shirley, NY 11967, USA