

Recombinant Mouse Ccl2 protein

Cat. No. Ccl2-5430M **Lot. No.** (See product label)

SPECIFICATION

Product Overview	Recombinant Mouse Ccl2 protein(P10148)(Gln24-Arg96) was expressed in E. coli.
Species	Mouse
Source	E.coli
ProteinLength	Gln24-Arg96
Tag	Non
Form	Lyophilized from a 0.2 µm filtered solution of PBS, pH 7.4.
Molecular Mass	8.5 KDa
Endotoxin	< 0.01 EU/µg as determined by LAL test.
Purity	Greater than 95% as determined by reducing SDS-PAGE.
Storage	Lyophilized protein should be stored at ≤ -20°C, stable for one year after receipt. Reconstituted protein solution can be stored at 2-8°C for 2-7 days. Aliquots of reconstituted samples are stable at ≤ -20°C for 3 months.
Reconstitution	Always centrifuge tubes before opening.Do not mix by vortex or pipetting. It is not recommended to reconstitute to a concentration less than 100µg/ml. Dissolve the lyophilized protein in distilled water.

 Tel: 1-631-559-9269 1-516-512-3133

 Email: info@creative-biomart.com  Fax: 1-631-938-8127

 45-1 Ramsey Road, Shirley, NY 11967, USA

Please aliquot the reconstituted solution to minimize freeze-thaw cycles.

GENE INFORMATION

Gene Name Ccl2 chemokine (C-C motif) ligand 2 [*Mus musculus*]

Official Symbol Ccl2

Synonyms CCL2; chemokine (C-C motif) ligand 2; C-C motif chemokine 2; small inducible cytokine A2; small-inducible cytokine A2; monocyte chemotactic protein 1; monocyte chemoattractant protein 1; monocyte chemoattractant protein-1; platelet-derived growth factor-inducible protein JE; JE; HC11; MCAF; MCP1; MCP-1; Scya2; Sigje; SMC-CF; AI323594;

Gene ID 20296

mRNA Refseq NM_011333

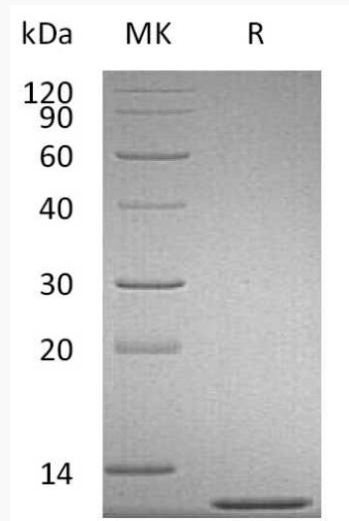
Protein Refseq NP_035463

 Tel: 1-631-559-9269 1-516-512-3133

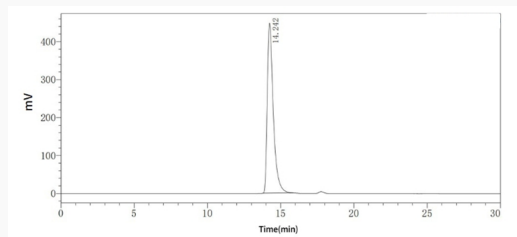
 Email: info@creative-biomart.com  Fax: 1-631-938-8127

 45-1 Ramsey Road, Shirley, NY 11967, USA

SDS-PAGE



SEC-HPLC



 Tel: 1-631-559-9269 1-516-512-3133

 Email: info@creative-biomart.com  Fax: 1-631-938-8127

 45-1 Ramsey Road, Shirley, NY 11967, USA