

Active Recombinant Mouse Ccl2 protein, His-tagged

Cat. No. Ccl2-5742M **Lot. No.** (See product label)

SPECIFICATION

Product Overview	Active Recombinant Mouse Ccl2 protein(P10148)(24~148 aa), fused with N-terminal His tag, was expressed in HEK293.
Species	Mouse
Source	HEK293
ProteinLength	24-148 aa
Form	Lyophilized from sterile PBS, pH7.4, containing 0.01% SKL, 1mM DTT, 5% Trehalose and Proclin300.
Bio-activity	Monocyte Chemotactic Protein 1 (MCP1), also known as C-C motif chemokine 2(CCL2), is a member of the β (C-C) subfamily of chemokines that is a chemoattractant for monocytes and basophils. Mouse CCL2 is secreted as a 14 kDa glycoprotein monomer but noncovalent dimers probably occur. CCL2 is best known as a chemotactic agent for mononuclear cells. Thus, chemotaxis assay used 24-well microchemotaxis system was undertaken to detect the chemotactic effect of recombinant mouse MCP1 on the THP-1 cell line. Briefly, THP-1 cells were seeded into the upper chambers (150 ul cell suspension, 10^6 cells/ml in RPMI 1640 with FBS free) and different concentrations of recombinant mouse MCP1 diluted with serum free RPMI 1640 was added in lower chamber with a polycarbonate filter (8 um pore size) used to separate the two compartments. After incubation at 37°C with 5% CO ₂ for 1h, the filter was removed, then cells in low chamber were observed by inverted

 Tel: 1-631-559-9269 1-516-512-3133

 Email: info@creative-biomart.com  Fax: 1-631-938-8127

 45-1 Ramsey Road, Shirley, NY 11967, USA

microscope at low magnification (×100) and the number of migrated cells were counted at high magnification (×400) randomly (five fields for each filter). Result shows recombinant mouse MCP1 is able to induce migration of THP-1 cells. The migrated THP-1 cells in low chamber at low magnification (×100) were shown. The optimum chemotaxis of MCP1 occurs at 0.1 ng/ml.

Molecular Mass 15.4kDa

Endotoxin <1.0EU per 1µg (determined by the LAL method).

Purity > 90% as determined by SDS-PAGE.

Storage Avoid repeated freeze/thaw cycles. Store at -20°C for 12 months. Aliquot and store at -80°C for 12 months.

Reconstitution Reconstitute in 10mM PBS (pH7.4) to a concentration of 0.1-1.0 mg/mL. Do not vortex.

GENE INFORMATION

Gene Name [Ccl2 chemokine \(C-C motif\) ligand 2 \[Mus musculus \]](#)

Official Symbol [Ccl2](#)

Synonyms CCL2; chemokine (C-C motif) ligand 2; C-C motif chemokine 2; small inducible cytokine A2; small-inducible cytokine A2; monocyte chemotactic protein 1; monocyte chemoattractant protein 1; monocyte chemoattractant protein-1; platelet-derived growth factor-inducible protein JE; JE; HC11; MCAF; MCP1; MCP-1; Scya2; Sigje; SMC-CF; AI323594;

Gene ID [20296](#)

 Tel: 1-631-559-9269 1-516-512-3133

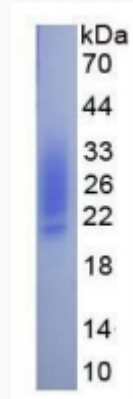
 Email: info@creative-biomart.com  Fax: 1-631-938-8127

 45-1 Ramsey Road, Shirley, NY 11967, USA

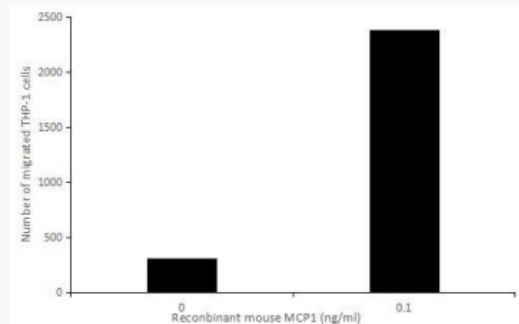
mRNA Refseq [NM_011333](#)

Protein Refseq [NP_035463](#)

SDS-PAGE



Activity



 Tel: 1-631-559-9269 1-516-512-3133

 Email: info@creative-biomart.com  Fax: 1-631-938-8127

 45-1 Ramsey Road, Shirley, NY 11967, USA