

Active Recombinant Mouse Ccl2 Protein (Gln24-Ala127), N-His tagged, Animal-free, Carrier-free

Cat. No. Ccl2-75M Lot. No. (See product label)

SPECIFICATION

Product Overview	Recombinant Mouse Ccl2 Protein (Gln24-Ala127) with N-His tag was expressed in E. coli and Animal-free as well as Carrier-free.
Species	Mouse
Source	E.coli
ProteinLength	Gln24-Ala127
Description	C-C Motif Chemokine Ligand 2 (CCL2) is a 13.88 kDa cytokine with 125 amino acid residues and is also known as monocyte chemoattractant protein 1 (MCP1). CCL2 is mainly secreted from monocytes, macrophages, and dendritic cells. It regulates many biological functions, such as recruitments of monocytes, memory T cells, eosinophils, and dendritic cells, extravasation of helper T cells, response to TNF α and IFN γ , and angiogenesis. In addition, upon binding with CCR4, it initiates leukocyte migration response to inflammation.
Form	Lyophilized
Bio-activity	Measure by its ability to chemoattract BaF3 cells transfected with CCR2A. The ED50 for this effect is < 8 ng/mL.
Molecular Mass	The protein has a calculated MW of 14.65 kDa. The protein migrates as 17-25 kDa under reducing condition (SDS-PAGE analysis).

 Tel: 1-631-559-9269 1-516-512-3133

 Email: info@creative-biomart.com  Fax: 1-631-938-8127

 45-1 Ramsey Road, Shirley, NY 11967, USA

Endotoxin	< 0.1 EU/μg of the protein by the LAL method.
Purity	>98% as determined by SDS-PAGE analysis.
Storage	This product is stable after storage at: -20 centigrade for 12 months in lyophilized state from date of receipt. -20 or -80 centigrade for 1 month under sterile conditions after reconstitution. Avoid repeated freeze/thaw cycles.
Storage Buffer	Lyophilized from a 0.2 μm filtered solution of PBS, pH 7.4.
Reconstitution	It is recommended to reconstitute the lyophilized protein in sterile H2O to a concentration not less than 200 μg/mL and incubate the stock solution for at least 20 min to ensure sufficient re-dissolved.
Shipping	The product is shipped with polar packs. Upon receipt, store it immediately at -20 centigrade or lower for long term storage.

GENE INFORMATION

Gene Name	Ccl2 chemokine (C-C motif) ligand 2 [Mus musculus (house mouse)]
Official Symbol	Ccl2
Synonyms	CCL2; chemokine (C-C motif) ligand 2; C-C motif chemokine 2; small inducible cytokine A2; small-inducible cytokine A2; monocyte chemotactic protein 1; monocyte chemoattractant protein 1; monocyte chemoattractant protein-1; platelet-derived growth factor-inducible protein JE; JE; HC11; MCAF; MCP1; MCP-1; Scya2; Sigje; SMC-CF; AI323594;
Gene ID	20296

 Tel: 1-631-559-9269 1-516-512-3133

 Email: info@creative-biomart.com  Fax: 1-631-938-8127

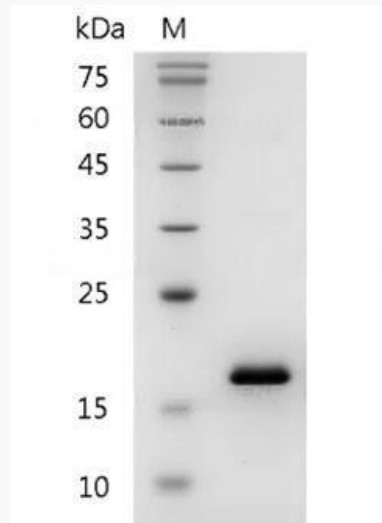
 45-1 Ramsey Road, Shirley, NY 11967, USA

mRNA Refseq [NM_011333](#)

Protein Refseq [NP_035463](#)

UniProt ID [P10148](#)

**SDS-PAGE analysis
of recombinant
mouse CCL2.**



 Tel: 1-631-559-9269 1-516-512-3133

 Email: info@creative-biomart.com  Fax: 1-631-938-8127

 45-1 Ramsey Road, Shirley, NY 11967, USA