

Recombinant Rat Ccl22 protein

Cat. No. Ccl22-637R **Lot. No.** (See product label)

SPECIFICATION

Product Overview	Recombinant Rat Ccl22 protein was expressed in Escherichia coli.
Species	Rat
Source	E.coli
ProteinLength	68
Description	CCL22 is a protein encoded by the CCL22 gene. It is highly expressed in macrophage, monocyte-derived dendritic cell and thymus, additionally, also detected in the tissues of thymus, lymph node and appendix. CCL22 can bind to CCR4, and is a chemoattractant for monocytes, monocyte-derived dendritic cells, and natural killer cells, but not for neutrophils, eosinophils, and resting T-lymphocytes. After secreted from monocyte-derived dendritic cells, the protein can be proteolytic cleaved into three forms: MDC (3-69), MDC (5-69), MDC (7-69).
Form	Lyophilized from a 0.2µm filtered concentrated solution in 2 × PBS, pH 7.4.
Bio-activity	Fully biologically active when compared to standard. The biologically active determined by a chemotaxis bioassay using human T-lymphocytes is in a concentration range of 10-100 ng/ml.
Molecular Mass	Approximately 7.9 kDa, a single, non-glycosylated polypeptide chain containing 68 amino acids.

 Tel: 1-631-559-9269 1-516-512-3133

 Email: info@creative-biomart.com  Fax: 1-631-938-8127

 45-1 Ramsey Road, Shirley, NY 11967, USA

AA Sequence	GPYGANVEDSICCCQDYIRHPLPPRFVKEFYWTSKSCRKPGVVLITIKNRDICADPRML WVKKILHKLA
Endotoxin	Less than 1 EU/g of rRtMDC/CCL22 as determined by LAL method.
Purity	>96% by SDS-PAGE and HPLC analysis.
Storage	Use a manual defrost freezer and avoid repeated freeze-thaw cycles. 12 months from date of receipt, -20 to -70 centigrade as supplied. 1 month, 2 to 8 centigrade under sterile conditions after reconstitution. 3 months, -20 to -70 centigrade under sterile conditions after reconstitution.
Reconstitution	We recommend that this vial be briefly centrifuged prior to opening to bring the contents to the bottom. Reconstitute in sterile distilled water or aqueous buffer containing 0.1 % BSA to a concentration of 0.1-1.0 mg/mL. Stock solutions should be apportioned into working aliquots and stored at ≤-20 centigrade. Further dilutions should be made in appropriate buffered solutions.

GENE INFORMATION

Gene Name	Ccl22
Official Symbol	Ccl22
Synonyms	CCL22; chemokine (C-C motif) ligand 22; C-C motif chemokine 22; small inducible cytokine A22; small inducible cytokine subfamily A (Cys-Cys) member 22; small inducible cytokine subfamily A (Cys-Cys), member 22; Mdc; Scya22; MGC108943;
Gene ID	117551
mRNA Refseq	NM_057203

 Tel: 1-631-559-9269 1-516-512-3133

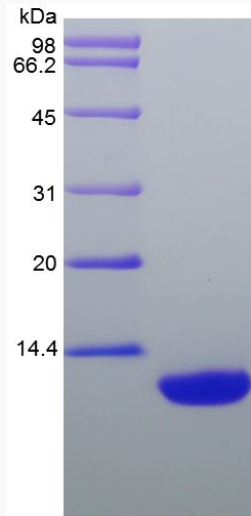
 Email: info@creative-biomart.com  Fax: 1-631-938-8127

 45-1 Ramsey Road, Shirley, NY 11967, USA

Protein Refseq NP_476551

UniProt ID Q5I0L5

SDS-PAGE of Ccl22-637R



 Tel: 1-631-559-9269 1-516-512-3133

 Email: info@creative-biomart.com  Fax: 1-631-938-8127

 45-1 Ramsey Road, Shirley, NY 11967, USA