

Recombinant Mouse Ccl24 Protein (Val27-Val119)

Cat. No. Ccl24-5452M Lot. No. (See product label)

SPECIFICATION

Product Overview	Recombinant mouse Ccl24 (Val27-Val119) without tag was expressed in E. coli.
Species	Mouse
Source	E.coli
ProteinLength	Val27-Val119
Description	Enables cytokine activity. Involved in positive regulation of angiogenesis and positive regulation of inflammatory response. Acts upstream of or within chemotaxis and positive regulation of eosinophil migration. Predicted to be located in extracellular region. Predicted to be active in extracellular space. Human ortholog (s) of this gene implicated in asthma and rhinitis. Orthologous to human CCL24 (C-C motif chemokine ligand 24).
Form	Lyophilized powder/frozen liquid
Molecular Mass	10.23 kDa
Purity	> 90 % as determined by SDS-PAGE
Notes	For research use only.
Storage	Use a manual defrost freezer and avoid repeated freeze thaw cycles. Store at 2 to 8 centigrade for one week. Store at -20 to -80 centigrade for twelve months from the

 Tel: 1-631-559-9269 1-516-512-3133

 Email: info@creative-biomart.com  Fax: 1-631-938-8127

 45-1 Ramsey Road, Shirley, NY 11967, USA

date of receipt.

Storage Buffer Supplied as solution form in PBS or lyophilized from PBS.

Reconstitution Reconstitute in sterile water for a stock solution.

Shipping They are shipped out with dry ice/blue ice unless customers require otherwise.

GENE INFORMATION

Gene Name [Ccl24 C-C motif chemokine ligand 24 \[Mus musculus \(house mouse\) \]](#)

Official Symbol [Ccl24](#)

Synonyms Ccl24; C-C motif chemokine ligand 24; CKb-6; MPIF-2; Scya24; C-C motif chemokine 24; CC chemokine CCL24; chemokine (C-C motif) ligand 24; eosinophil chemotactic protein 2; eotaxin-2; small-inducible cytokine A24

Gene ID [56221](#)

mRNA Refseq [NM_019577](#)

Protein Refseq [NP_062523](#)

UniProt ID [Q9JKC0](#)

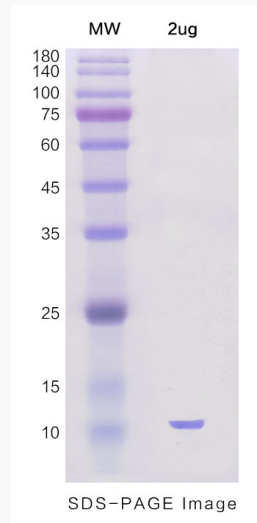
 Tel: 1-631-559-9269 1-516-512-3133

 Email: info@creative-biomart.com  Fax: 1-631-938-8127

 45-1 Ramsey Road, Shirley, NY 11967, USA



SDS-PAGE



Tel: 1-631-559-9269 1-516-512-3133

Email: info@creative-biomart.com Fax: 1-631-938-8127

45-1 Ramsey Road, Shirley, NY 11967, USA