

Recombinant Rat Ccl24 protein

Cat. No. Ccl24-638R **Lot. No.** (See product label)

SPECIFICATION

Product Overview	Recombinant Rat Ccl24 protein was expressed in Escherichia coli.
Species	Rat
Source	E.coli
ProteinLength	98
Description	CCL24, also named MPIF-2, Eotaxin-2 and Ckβ6, is a novel CC chemokine recently identified. It is a secreted protein, encoded by CCL24 gene, and produced by activated monocytes and T lymphocytes. CCL24 signals through the CCR3 receptor and has functions of chemotactic activity for resting T-lymphocytes and eosinophils, but none for monocytes and activated lymphocytes. The plasma levels of CCL24 and the aspirin-exacerbated respiratory disease (such as asthma) morbidity rate have positive correlation.
Form	Lyophilized from a 0.2µm filtered concentrated solution in 2 × PBS, pH 7.4.
Bio-activity	Fully biologically active when compared to standard. The biologically active determined by a chemotaxis bioassay using human peripheral blood eosinophils is in a concentration of 50-250 ng/ml.
Molecular Mass	Approximately 10.5 kDa, a single non-glycosylated polypeptide chain consisting of an N-terminal Methionine and the mature rat Eotaxin-2.

 Tel: 1-631-559-9269 1-516-512-3133

 Email: info@creative-biomart.com  Fax: 1-631-938-8127

 45-1 Ramsey Road, Shirley, NY 11967, USA

AA Sequence	MPTGSVTIPSSCCVTFISKKIPVNRVISYQLANGSICPKAGVIFITKKGHKICTDPKLPW VQKHIKNLDAKRNQPSEGAKALGPKFVIQKLRGNSTKV
Endotoxin	Less than 1 EU/g of rRtEotaxin-2/CCL24 as determined by LAL method.
Purity	>96% by SDS-PAGE and HPLC analysis.
Storage	Use a manual defrost freezer and avoid repeated freeze-thaw cycles. 12 months from date of receipt, -20 to -70 centigrade as supplied. 1 month, 2 to 8 centigrade under sterile conditions after reconstitution. 3 months, -20 to -70 centigrade under sterile conditions after reconstitution.
Reconstitution	We recommend that this vial be briefly centrifuged prior to opening to bring the contents to the bottom. Reconstitute in sterile distilled water or aqueous buffer containing 0.1 % BSA to a concentration of 0.1-1.0 mg/mL. Stock solutions should be apportioned into working aliquots and stored at ≤-20 centigrade. Further dilutions should be made in appropriate buffered solutions.

GENE INFORMATION

Gene Name	Ccl24
Official Symbol	Ccl24
Synonyms	CCL24; chemokine (C-C motif) ligand 24; C-C motif chemokine 24; eotaxin-2; eotaxin-2-like protein; eosinophil chemotactic protein 2;
Gene ID	288593
mRNA Refseq	NM_001013045

 Tel: 1-631-559-9269 1-516-512-3133

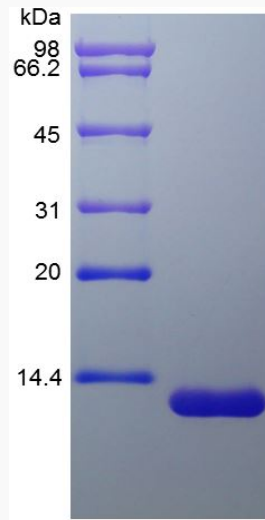
 Email: info@creative-biomart.com  Fax: 1-631-938-8127

 45-1 Ramsey Road, Shirley, NY 11967, USA

Protein Refseq NP_001013063

UniProt ID Q5PPP2

SDS-PAGE of Ccl24-638R



 Tel: 1-631-559-9269 1-516-512-3133

 Email: info@creative-biomart.com  Fax: 1-631-938-8127

 45-1 Ramsey Road, Shirley, NY 11967, USA