

Active Recombinant Mouse Ccl28 Protein

Cat. No. Ccl28-2036M Lot. No. (See product label)

SPECIFICATION

| | |
|-------------------------|---|
| Product Overview | Purified recombinant protein of Mouse chemokine (C-C motif) ligand 28 (Ccl28 / MEC) without tag was expressed in E. coli. |
| Species | Mouse |
| Source | E.coli |
| ProteinLength | Met-(Ile23-Arg130) |
| Description | Chemotactic for resting CD4, CD8 T-cells and eosinophils. Binds to CCR10 and induces calcium mobilization in a dose-dependent manner. |
| Bio-activity | Bioactivity was measured by its property to chemoattract BaF3-hCCR10 transfectants in a dose dependent manner. |
| Molecular Mass | 12.4 kDa |
| Endotoxin | Less than 0.01 ng/μg protein as determined by the LAL method |
| Purity | > 98%, as determined by Coomassie stained SDS-PAGE. |
| Stability | Unopened vial can be stored between 2 and 8 centigrade for up to 2 weeks, at -20 centigrade for up to 6 months, or at -70 centigrade or below until the expiration date. Aliquots can be stored between 2 and 8 centigrade for up to one week and stored at -20 centigrade or colder for up to 3 months. Avoid repeated freeze/thaw cycles. |

 Tel: 1-631-559-9269 1-516-512-3133

 Email: info@creative-biomart.com  Fax: 1-631-938-8127

 45-1 Ramsey Road, Shirley, NY 11967, USA

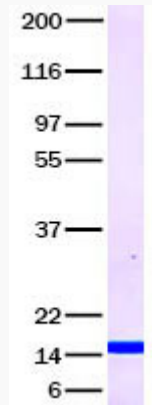
| | |
|-------------------------|---|
| Storage | Store at -80 centigrade. |
| Concentration | Protein formulated and vialled at >50 µg/mL in specified buffer |
| Storage Buffer | 10 mM NaH ₂ PO ₄ , 0.15 M NaCl, pH 7.2 |
| GENE INFORMATION | |
| Gene Name | Ccl28 chemokine (C-C motif) ligand 28 [Mus musculus (house mouse)] |
| Official Symbol | Ccl28 |
| Synonyms | Ccl28; chemokine (C-C motif) ligand 28; MEC; CCK1; Scya; Scya28; C-C motif chemokine 28; small-inducible cytokine A28 |
| Gene ID | 56838 |
| mRNA Refseq | NM_020279 |
| Protein Refseq | NP_064675 |
| UniProt ID | Q9JIL2 |

 Tel: 1-631-559-9269 1-516-512-3133

 Email: info@creative-biomart.com  Fax: 1-631-938-8127

 45-1 Ramsey Road, Shirley, NY 11967, USA

SDS-PAGE



 Tel: 1-631-559-9269 1-516-512-3133

 Email: info@creative-biomart.com  Fax: 1-631-938-8127

 45-1 Ramsey Road, Shirley, NY 11967, USA