

Recombinant Rat Ccl28 protein

Cat. No. Ccl28-639R **Lot. No.** (See product label)

SPECIFICATION

Product Overview	Recombinant Rat Ccl28 protein was expressed in Escherichia coli.
Species	Rat
Source	E.coli
ProteinLength	116
Description	CCL28 belongs to CC family chemokine, also named mucosae-associated epithelial chemokine (MEC). The CCL28 mRNA is highly expressed by epithelial cells of diverse tissues including normal and pathological colon, salivary gland, mammary gland, trachea and rectum. The protein signals through CCR3 and CCR10, and chemotactic for resting CD4, CD8 T-cells and eosinophils. CCL28 shares the most homology with CCL27/CTACK.
Form	Lyophilized from a 0.2µm filtered concentrated solution in 20 mM PB, pH 7.4, 200 mM NaCl.
Bio-activity	Fully biologically active when compared to standard. The biologically active determined by a chemotaxis bioassay using human lymphocytes is in a concentration range of 5.0-50 ng/ml.
Molecular Mass	Approximately 13.1 kDa, a single non-glycosylated polypeptide chain containing 116 amino acids.

 Tel: 1-631-559-9269 1-516-512-3133

 Email: info@creative-biomart.com  Fax: 1-631-938-8127

 45-1 Ramsey Road, Shirley, NY 11967, USA

AA Sequence	SEAILPIASSCCTEVSHHIPPRLRLERVNSCSIQRADGDCDLAAVILHVKRRRICVSPHN PTLKRWMSASEMKNKGKENCPCPRKKQDSGKDRKGHTPRKHGKHGTRRIHGTHDHE APR
Endotoxin	Less than 1 EU/g of rRtMEC/CCL28 as determined by LAL method.
Purity	>96% by SDS-PAGE and HPLC analysis.
Storage	Use a manual defrost freezer and avoid repeated freeze-thaw cycles. 12 months from date of receipt, -20 to -70 centigrade as supplied. 1 month, 2 to 8 centigrade under sterile conditions after reconstitution. 3 months, -20 to -70 centigrade under sterile conditions after reconstitution.
Reconstitution	We recommend that this vial be briefly centrifuged prior to opening to bring the contents to the bottom. Reconstitute in sterile distilled water or aqueous buffer containing 0.1 % BSA to a concentration of 0.1-1.0 mg/mL. Stock solutions should be apportioned into working aliquots and stored at ≤-20 centigrade. Further dilutions should be made in appropriate buffered solutions.

GENE INFORMATION

Gene Name	Ccl28
Official Symbol	Ccl28
Synonyms	CCL28; chemokine (C-C motif) ligand 28; C-C motif chemokine 28; CC chemokine CCL28; Scya28;
Gene ID	114492
mRNA Refseq	NM_053700

 Tel: 1-631-559-9269 1-516-512-3133

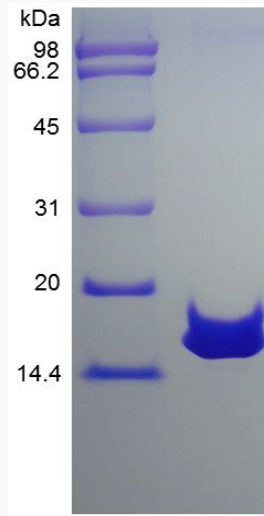
 Email: info@creative-biomart.com  Fax: 1-631-938-8127

 45-1 Ramsey Road, Shirley, NY 11967, USA

Protein Refseq NP_446152

UniProt ID Q91Y39

SDS-PAGE of Ccl28-639R



 Tel: 1-631-559-9269 1-516-512-3133

 Email: info@creative-biomart.com  Fax: 1-631-938-8127

 45-1 Ramsey Road, Shirley, NY 11967, USA