

## Recombinant Mouse Ccl3 protein

**Cat. No.** Ccl3-292M    **Lot. No.** (See product label)

### SPECIFICATION

<b>Product Overview</b>	Recombinant Mouse Ccl3 protein was expressed in Escherichia coli.
<b>Species</b>	Mouse
<b>Source</b>	E.coli
<b>ProteinLength</b>	69
<b>Description</b>	This locus represents a small inducible cytokine. The encoded protein, also known as macrophage inflammatory protein 1 alpha, plays a role in inflammatory responses through binding to the receptors CCR1, CCR4 and CCR5. Polymorphisms at this locus may be associated with both resistance and susceptibility to infection by human immunodeficiency virus type 1.
<b>Form</b>	Lyophilized from a 0.2µm filtered concentrated solution in 30 % Acetonitrile and 0.1 % TFA.
<b>Bio-activity</b>	Fully biologically active when compared to standard. The biological activity determined by a chemoattract bioassay using murine splenocytes is in a concentration range of 10-100 ng/ml.
<b>Molecular Mass</b>	Approximately 7.9 kDa protein containing 69 amino acid residues, including the four highly conserved cysteine residues present in CC chemokines.
<b>AA Sequence</b>	APYGADTPTACCFSSYSRKIPRQFIVDYFETSSLCSQPGVIFLTKRNRQICADSKETWV

 Tel: 1-631-559-9269    1-516-512-3133

 Email: [info@creative-biomart.com](mailto:info@creative-biomart.com)     Fax: 1-631-938-8127

 45-1 Ramsey Road, Shirley, NY 11967, USA

	QEYITDLELNA
<b>Endotoxin</b>	Less than 0.1 EU/μg of rMuMIP-1α/CCL3 as determined by LAL method.
<b>Purity</b>	>98% by SDS-PAGE and HPLC analysis.
<b>Storage</b>	Use a manual defrost freezer and avoid repeated freeze-thaw cycles. 12 months from date of receipt, -20 to -70 centigrade as supplied. 1 month, 2 to 8 centigrade under sterile conditions after reconstitution. 3 months, -20 to -70 centigrade under sterile conditions after reconstitution.
<b>Reconstitution</b>	We recommend that this vial be briefly centrifuged prior to opening to bring the contents to the bottom. Reconstitute in sterile distilled water or aqueous buffer containing 0.1 % BSA to a concentration of 0.1-1.0 mg/mL. Stock solutions should be apportioned into working aliquots and stored at ≤-20 centigrade. Further dilutions should be made in appropriate buffered solutions.
<b>GENE INFORMATION</b>	
<b>Gene Name</b>	Ccl3
<b>Official Symbol</b>	Ccl3
<b>Synonyms</b>	CCL3; chemokine (C-C motif) ligand 3; C-C motif chemokine 3; TY-5; L2G25B; MIP1 (a); SIS-alpha; MIP-1 alpha; MIP-1-alpha; small inducible cytokine A3; small-inducible cytokine A3; heparin-binding chemotaxis protein; macrophage inflammatory protein-1alpha; macrophage inflammatory protein 1-alpha; Mip1a; Scya3; GOS19-1; AI323804; MIP1-(a); LD78alpha; MIP-1alpha; MIP1-alpha;
<b>Gene ID</b>	20302

 Tel: 1-631-559-9269 1-516-512-3133

 Email: [info@creative-biomart.com](mailto:info@creative-biomart.com)  Fax: 1-631-938-8127

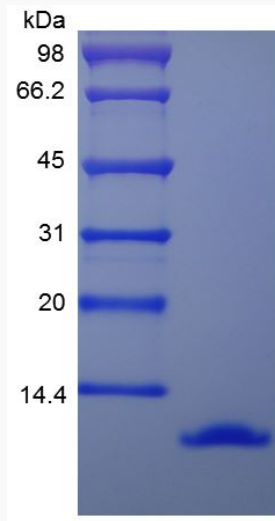
 45-1 Ramsey Road, Shirley, NY 11967, USA

mRNA Refseq [NM\\_011337](#)

Protein Refseq [NP\\_035467](#)

UniProt ID [P10855](#)

**SDS-PAGE of Ccl3-  
292M**



 Tel: 1-631-559-9269 1-516-512-3133

 Email: [info@creative-biomart.com](mailto:info@creative-biomart.com)  Fax: 1-631-938-8127

 45-1 Ramsey Road, Shirley, NY 11967, USA