

Recombinant Mouse Ccl3 Protein, His-tagged

Cat. No. Ccl3-7337M **Lot. No.** (See product label)

SPECIFICATION

Product Overview	Recombinant mouse CCL3 protein, fused to His-tag at N-terminus, was expressed in E. coli and purified by using conventional chromatography techniques.
Species	Mouse
Source	E.coli
ProteinLength	24-92
Description	Monokine with inflammatory, pyrogenic and chemokinetic properties. Has a potent chemotactic activity for eosinophils. Binding to a high-affinity receptor activates calcium release in neutrophils.
Form	Liquid
Molecular Mass	10.4 kDa
AA Sequence	MGSSHHHHHSSGLVPRGSHMGSMAPYGADTPTACCFYSYRKIPRQFIVDYFETS SLCSQPGVIFLTKRNRQICADSKETWVQEYITDLELNA
Purity	> 90 % by SDS-PAGE
Stability	Shelf life: one year from despatch.
Storage	Store undiluted at 2-8 centigrade for one week or (in aliquots) at -20 to -80 centigrade

 Tel: 1-631-559-9269 1-516-512-3133

 Email: info@creative-biomart.com  Fax: 1-631-938-8127

 45-1 Ramsey Road, Shirley, NY 11967, USA

for longer. Avoid repeated freezing and thawing.

Concentration	0.5 mg/mL (determined by Bradford assay)
Storage Buffer	20 mM Sodium citrate buffer (pH 3.5) containing 10 % glycerol

GENE INFORMATION

Gene Name	Ccl3 chemokine (C-C motif) ligand 3 [Mus musculus (house mouse)]
Official Symbol	Ccl3
Synonyms	Ccl3; chemokine (C-C motif) ligand 3; Mi; CCL; Scy; LD78; MIP-; MIP1; MIP1-; Mip1a; Scya3; G0S19-; G0S19-1; AI323804; MIP1-(a); LD78alpha; MIP-1alpha; MIP1-alpha; C-C motif chemokine 3; L2G25B; MIP-1-alpha; MIP1 (a); SIS-alpha; TY-5; heparin-binding chemotaxis protein; macrophage inflammatory protein 1-alpha; macrophage inflammatory protein-1alpha; small-inducible cytokine A3
Gene ID	20302
mRNA Refseq	NM_011337
Protein Refseq	NP_035467
UniProt ID	P10855

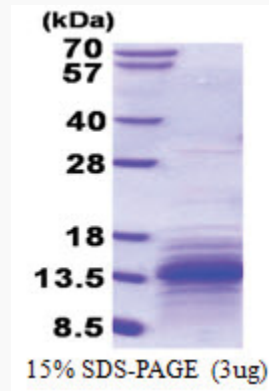
 Tel: 1-631-559-9269 1-516-512-3133

 Email: info@creative-biomart.com  Fax: 1-631-938-8127

 45-1 Ramsey Road, Shirley, NY 11967, USA



SDS-PAGE



Tel: 1-631-559-9269 1-516-512-3133

Email: info@creative-biomart.com Fax: 1-631-938-8127

45-1 Ramsey Road, Shirley, NY 11967, USA