

Active GMP Recombinant Mouse Ccl4 Protein, His-Tagged

Cat. No. Ccl4-01M Lot. No. (See product label)

SPECIFICATION

Product Overview	GMP Recombinant Mouse Ccl4 Protein, His-Tagged was expressed in Escherichia coli cell-derived in an animal component free process under cGMP guidelines.
Species	Mouse
Source	E.coli
Description	Predicted to enable chemokine receptor binding activity and identical protein binding activity. Acts upstream of or within cellular response to xenobiotic stimulus. Located in extracellular space. Is expressed in central nervous system; genitourinary system; and retina. Human ortholog(s) of this gene implicated in acquired immunodeficiency syndrome and human immunodeficiency virus infectious disease. Orthologous to several human genes including CCL4L2 (C-C motif chemokine ligand 4 like 2).
Form	Lyophilized
Bio-activity	Measure by its ability to chemoattract BaF3 cells transfected with human CCR5. The ED50 for this effect is <4 ng/mL.
AA Sequence	APMGSDPPTSCCF SYTSRQLHRSFVMDYYETSSLCSKPAVVFLTKRGRQICANPSE PWVTEYMSDLELN with polyhistidine tag at the N-terminus
Endotoxin	<0.1 EU per 1 µg of the protein by the LAL method.
Purity	>98% as determined by SDS-PAGE. Ni-NTA chromatography

 Tel: 1-631-559-9269 1-516-512-3133

 Email: info@creative-biomart.com  Fax: 1-631-938-8127

 45-1 Ramsey Road, Shirley, NY 11967, USA

Notes	Please use within one month after protein reconstitution.
Storage	Lyophilized protein should be stored at -20°C. Upon reconstitution, protein aliquots should be stored at -20°C or -80°C.
Storage Buffer	The protein was lyophilized from a solution containing 1X PBS, pH 7.4.
Reconstitution	It is recommended to reconstitute the lyophilized protein in sterile H ₂ O to a concentration not less than 100 µg/mL and incubate the stock solution for at least 20 min to ensure sufficient re-dissolved.

GENE INFORMATION

Gene Name	Ccl4 chemokine (C-C motif) ligand 4 [Mus musculus (house mouse)]
Official Symbol	Ccl4
Synonyms	Act-2; Mip1b; Scya4; MIP-1B; AT744.1
Gene ID	20303
mRNA Refseq	NM_013652.2
Protein Refseq	NP_038680.1
UniProt ID	P14097

 Tel: 1-631-559-9269 1-516-512-3133

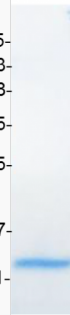
 Email: info@creative-biomart.com  Fax: 1-631-938-8127

 45-1 Ramsey Road, Shirley, NY 11967, USA



kDa

75-
63-
48-
35-
25-
17-
11-



Tel: 1-631-559-9269 1-516-512-3133

Email: info@creative-biomart.com Fax: 1-631-938-8127

45-1 Ramsey Road, Shirley, NY 11967, USA