

## Recombinant Mouse Ccl5 protein, hFc-tagged

**Cat. No.** Ccl5-7685M    **Lot. No.** (See product label)

### SPECIFICATION

|                         |  |
|-------------------------|--|
| <b>Product Overview</b> | Recombinant Mouse Ccl5 protein(P30882)(Ser24-Ser91), fused with N-terminal hFc tag, was expressed in HEK293.                             |
| <b>Species</b>          | Mouse  |
| <b>Source</b>           | HEK293   |
| <b>ProteinLength</b>    | Ser24-Ser91  |
| <b>Tag</b>              | N-hFc  |
| <b>Form</b>             | Lyophilized from 0.22µm filtered solution in PBS (pH 7.4). Normally 8% trehalose is added as protectant before lyophilization.           |
| <b>Molecular Mass</b>   | The protein has a predicted MW of 35.2 kDa. Due to glycosylation, the protein migrates to 40-45 kDa based on Tris-Bis PAGE result.       |
| <b>Endotoxin</b>        | Less than 1EU per µg by the LAL method.  |
| <b>Purity</b>           | > 95% as determined by Tris-Bis PAGE;> 95% as determined by HPLC   |
| <b>Storage</b>          | Reconstituted protein stable at -80°C for 12 months, 4°C for 1 week. Use a manual defrost freezer and avoid repeated freeze-thaw cycles. |
| <b>Reconstitution</b>   | Centrifuge tubes before opening. Reconstituting to a concentration more than 100   |

 Tel: 1-631-559-9269    1-516-512-3133

 Email: [info@creative-biomart.com](mailto:info@creative-biomart.com)     Fax: 1-631-938-8127

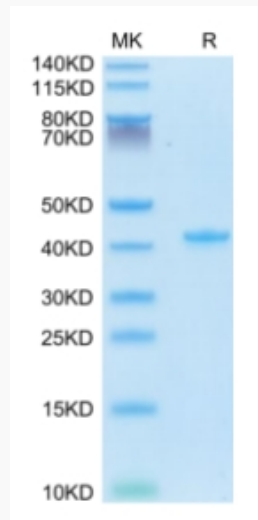
 45-1 Ramsey Road, Shirley, NY 11967, USA

µg/ml is recommended. Dissolve the lyophilized protein in distilled water.

## GENE INFORMATION

|                        |  |
|------------------------|--|
| <b>Gene Name</b>       | Ccl5 chemokine (C-C motif) ligand 5 [ <i>Mus musculus</i> ]  |
| <b>Official Symbol</b> | Ccl5   |
| <b>Synonyms</b>        | CCL5; chemokine (C-C motif) ligand 5; C-C motif chemokine 5; SIS-delta; small inducible cytokine A5; small-inducible cytokine A5; T-cell-specific protein RANTES; SISd; Scya5; RANTES; TCP228; MuRantes; |
| <b>Gene ID</b>         | 20304  |
| <b>mRNA Refseq</b>     | NM_013653  |
| <b>Protein Refseq</b>  | NP_038681  |

### Tris-Bis PAGE



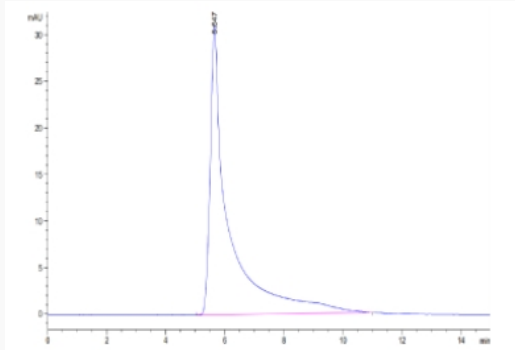
Tel: 1-631-559-9269 1-516-512-3133

Email: [info@creative-biomart.com](mailto:info@creative-biomart.com) Fax: 1-631-938-8127

45-1 Ramsey Road, Shirley, NY 11967, USA



SEC-HPLC



Tel: 1-631-559-9269 1-516-512-3133

Email: [info@creative-biomart.com](mailto:info@creative-biomart.com) Fax: 1-631-938-8127

45-1 Ramsey Road, Shirley, NY 11967, USA