

Active Recombinant Mouse Ccl6 Protein

Cat. No. Ccl6-134M **Lot. No.** (See product label)

SPECIFICATION

Product Overview	Purified recombinant protein of Mouse chemokine (C-C motif) ligand 6 (Ccl6) without tag was expressed in E.coli.
Species	Mouse
Source	E.coli
Description	CCL6(22-95) and CCL6(23-95) are potent chemoattractants.
Bio-activity	Determined by its ability to chemoattract Balb/c mouse spleen MNCs using a concentration range of 10.0-100.0 ng/ml.
Molecular Mass	10.7 kDa
AA Sequence	GLIQEIEKEDRRYNPPIIHQGFQDTSSDCCFSYATQIPCKRFIYYFPTSGGCIKPGIIFIS RRGTQVCADPSDRRVQRCLSTLKQGPRSGNKVIA
Endotoxin	Endotoxin level is < 0.1 ng/g of protein (< 1 EU/g)
Purity	>95%, as determined by SDS-PAGE and Coomassie blue staining
Stability	Stable for at least 6 months from date of receipt under proper storage and handling conditions.
Storage	Store at -80 centigrade.

 Tel: 1-631-559-9269 1-516-512-3133

 Email: info@creative-biomart.com  Fax: 1-631-938-8127

 45-1 Ramsey Road, Shirley, NY 11967, USA

Storage Buffer Lyophilized from a 0.2 M filtered solution of 20mM phosphate buffer, 100mM NaCl, pH 7.2

Reconstitution Resuspend the protein in the desired concentration in proper buffer.

GENE INFORMATION

Gene Name Ccl6 chemokine (C-C motif) ligand 6 [*Mus musculus* (house mouse)]

Official Symbol Ccl6

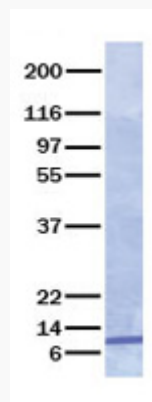
Synonyms Ccl6; chemokine (C-C motif) ligand 6; c10; MRP-1; Scya6; C-C motif chemokine 6; CC chemokine C10; small-inducible cytokine A6

Gene ID 20305

mRNA Refseq NM_009139

Protein Refseq NP_033165

UniProt ID P27784



 Tel: 1-631-559-9269 1-516-512-3133

 Email: info@creative-biomart.com  Fax: 1-631-938-8127

 45-1 Ramsey Road, Shirley, NY 11967, USA