

Recombinant Rat Ccl6 protein, His & T7-tagged

Cat. No. Ccl6-1449R Lot. No. (See product label)

SPECIFICATION

Product Overview	Recombinant Rat Ccl6 aa. (Ala21~Ala115 (Accession # Q68FP3)) fused with N-terminal His & T7 tag was produced in E. coli cells.
Species	Rat
Source	E.coli
ProteinLength	Ala21~Ala115
Form	Freeze-dried powder
Molecular Mass	Predicted Molecular Mass: 14.3kDa.
Endotoxin	<1.0EU per 1g (determined by the LAL method).
Purity	>95%
Characteristic	The isoelectric point is 9.4.
Applications	SDS-PAGE; WB; ELISA; IP.
Stability	The thermal stability is described by the loss rate. The loss rate was determined by accelerated thermal degradation test, that is, incubate the protein at 37°C for 48h, and no obvious degradation and precipitation were observed. The loss rate is less than 5% within the expiration date under appropriate storage condition.

 Tel: 1-631-559-9269 1-516-512-3133

 Email: info@creative-biomart.com  Fax: 1-631-938-8127

 45-1 Ramsey Road, Shirley, NY 11967, USA

Storage	Avoid repeated freeze/thaw cycles. Store at 2-8°C for one month. Aliquot and store at -80°C for 12 months.
Storage buffer	Supplied as lyophilized form in PBS, pH7.4, containing 5% sucrose, 0.01% sarcosyl.
Reconstitution	Reconstitute in sterile PBS, pH7.2-pH7.4.

GENE INFORMATION

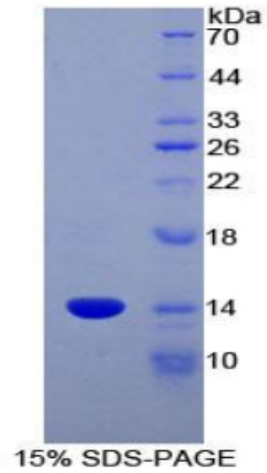
Gene Name	Ccl6 chemokine (C-C motif) ligand 6 [Rattus norvegicus (Norway rat)]
Official Symbol	Ccl6
Synonyms	Mrp-1; Scay6; chemokine ligand 6; small-inducible cytokine A6; C-C motif chemokine 6
Gene ID	287910
mRNA Refseq	NM_001004202.2
Protein Refseq	NP_001004202.1
UniProt ID	Q68FP3

 Tel: 1-631-559-9269 1-516-512-3133

 Email: info@creative-biomart.com  Fax: 1-631-938-8127

 45-1 Ramsey Road, Shirley, NY 11967, USA

SDS-PAGE



 Tel: 1-631-559-9269 1-516-512-3133

 Email: info@creative-biomart.com  Fax: 1-631-938-8127

 45-1 Ramsey Road, Shirley, NY 11967, USA