

Recombinant Mouse Ccl6 protein, His-tagged

Cat. No. Ccl6-3993M Lot. No. (See product label)

SPECIFICATION

Product Overview Recombinant Mouse Ccl6 (Gly22-Ala116) protein was fused to His-tag at C-terminus and expressed in human 293 cells (HEK293).

Species Mouse

Source HEK293

ProteinLength Gly22-Ala116

Description Chemokine (C-C motif) ligand 6 (CCL6), a member of the CC chemokine family, was initially identified as a transcript that is induced in bone marrow cells upon stimulation with GM-CSF. CCL6 has only been identified in rodents. A human homologue for mouse CCL6 has not been identified. The mCCL6 cDNA encodes a 116 amino acid residue precursor protein with a hydrophobic signal peptide that is cleaved to yield a 95 amino acid residue mature protein. In mice, CCL6 is expressed in cells from neutrophil and macrophage lineages, where it is strongly induced upon GM-CSF stimulation. Mouse CCL6 expression was also shown to be strongly induced by IL-4 in mouse macrophages and by cytokine IL13 in mouse lung. Mouse CCL6 is located on chromosome 11. The cell surface receptor for CCL6 is believed to be the chemokine receptor CCR1.

Predicted N Terminal Gly22

Form Lyophilized from 0.22 µm filtered solution in PBS, pH7.4, 10% trehalose.

 Tel: 1-631-559-9269 1-516-512-3133

 Email: info@creative-biomart.com  Fax: 1-631-938-8127

 45-1 Ramsey Road, Shirley, NY 11967, USA

Molecular Mass	The protein has a calculated MW of 11.4 kDa. The protein migrates as 14 kDa under reducing (R) condition (SDS-PAGE).
Endotoxin	Less than 1.0 EU per µg by the LAL method.
Purity	>90% as determined by SDS-PAGE.
Storage	<p>For long term storage, the product should be stored at lyophilized state at -20 centigrade or lower.</p> <p>Please avoid repeated freeze-thaw cycles.</p> <p>This product is stable after storage at:</p> <p>-20 to -70 centigrade for 12 months in lyophilized state;</p> <p>-70 centigrade for 3 months under sterile conditions after reconstitution.</p>
Reconstitution	It is recommended that sterile water be added to the vial to prepare a stock solution of 0.2 ug/ul. Centrifuge the vial at 4°C before opening to recover the entire contents.

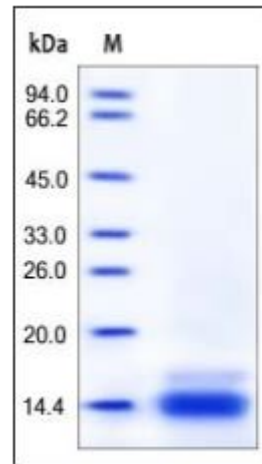
GENE INFORMATION

Gene Name	Ccl6
Official Symbol	Ccl6
Synonyms	CCL6; chemokine (C-C motif) ligand 6; C-C motif chemokine 6; CC chemokine C10; small inducible cytokine A6; small-inducible cytokine A6; c10; MRP-1; Scya6
Gene ID	20305
mRNA Refseq	NM_009139
Protein Refseq	NP_033165

 Tel: 1-631-559-9269 1-516-512-3133

 Email: info@creative-biomart.com  Fax: 1-631-938-8127

 45-1 Ramsey Road, Shirley, NY 11967, USA

UniProt ID**P27784****SDS-PAGE of Ccl6-
3993M**

Mouse CCL6, His Tag on SDS-PAGE under reducing (R) condition. The gel was stained overnight with Coomassie Blue. The purity of the protein is greater than 90%.

 Tel: 1-631-559-9269 1-516-512-3133 Email: info@creative-biomart.com  Fax: 1-631-938-8127 45-1 Ramsey Road, Shirley, NY 11967, USA