

## Recombinant Mouse Ccl7 protein

Cat. No. Ccl7-618M Lot. No. (See product label)

### SPECIFICATION

<b>Product Overview</b>	Recombinant Mouse Ccl7 protein was expressed in Escherichia coli.
<b>Species</b>	Mouse
<b>Source</b>	E.coli
<b>ProteinLength</b>	74
<b>Description</b>	<p>Murine CCL7, also known as MARC, is belonging to the CC chemokine family. It is encoded by the gene CCL7 and was isolated from a mouse mast cell line after Fc epsilon RI triggering by IgE plus antigen. Sequence comparisons suggest that MARC may be the mouse homologue of the human MCP-3 gene. Similar to the human system, MARC/FIC is postulated the murine MCP-3. The MCP-3 protein family signals through CCR2 expect MCP-1 and possess cross-reacts across species. CCL7/MCP3 has chemotactic function for monocytes and eosinophils, but not for neutrophils.</p>
<b>Form</b>	Lyophilized from a 0.2µm filtered concentrated solution in 2x PBS, pH 7.4.
<b>Bio-activity</b>	Fully biologically active when compared to standard. The biologically active determined by a chemotaxis bioassay using human monocytes is in a concentration range of 100-300 ng/ml.
<b>Molecular Mass</b>	Approximately 8.5 kDa, a single, non-glycosylated polypeptide chain containing 74 amino acids.

 Tel: 1-631-559-9269 1-516-512-3133

 Email: [info@creative-biomart.com](mailto:info@creative-biomart.com)  Fax: 1-631-938-8127

 45-1 Ramsey Road, Shirley, NY 11967, USA

<b>AA Sequence</b>	QPDGPNASTCCYVKKQKIPKRNLKSYRRITSSRCPWEAVIFKTKKGMVCAEAHQK WVEEAIAYLDMKTPTPKP
<b>Endotoxin</b>	Less than 1 EU/g of rMuMCP-3/CCL7 as determined by LAL method.
<b>Purity</b>	>95% by SDS-PAGE and HPLC analysis.
<b>Storage</b>	Use a manual defrost freezer and avoid repeated freeze-thaw cycles. 12 months from date of receipt, -20 to -70 centigrade as supplied. 1 month, 2 to 8 centigrade under sterile conditions after reconstitution. 3 months, -20 to -70 centigrade under sterile conditions after reconstitution.
<b>Reconstitution</b>	We recommend that this vial be briefly centrifuged prior to opening to bring the contents to the bottom. Reconstitute in sterile distilled water or aqueous buffer containing 0.1 % BSA to a concentration of 0.1-1.0 mg/mL. Stock solutions should be apportioned into working aliquots and stored at ≤-20 centigrade. Further dilutions should be made in appropriate buffered solutions.

## GENE INFORMATION

<b>Gene Name</b>	Ccl7
<b>Official Symbol</b>	Ccl7
<b>Synonyms</b>	CCL7; chemokine (C-C motif) ligand 7; C-C motif chemokine 7; RANTES/sis homolog; intercrine/chemokine MARC; small inducible cytokine A7; small-inducible cytokine A7; monocyte chemotactic protein 3; monocyte chemoattractant protein 3; fic; marc; mcp3; MCP-3; Scya7;
<b>Gene ID</b>	20306

 Tel: 1-631-559-9269 1-516-512-3133

 Email: [info@creative-biomart.com](mailto:info@creative-biomart.com)  Fax: 1-631-938-8127

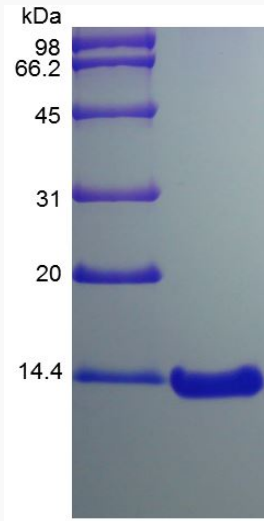
 45-1 Ramsey Road, Shirley, NY 11967, USA

mRNA Refseq [NM\\_013654](#)

Protein Refseq [NP\\_038682](#)

UniProt ID [Q03366](#)

SDS-PAGE of Ccl7-  
618M



 Tel: 1-631-559-9269 1-516-512-3133

 Email: [info@creative-biomart.com](mailto:info@creative-biomart.com)  Fax: 1-631-938-8127

 45-1 Ramsey Road, Shirley, NY 11967, USA