

Recombinant Rat Ccl7 protein

Cat. No. Ccl7-635R **Lot. No.** (See product label)

SPECIFICATION

Product Overview	Recombinant Rat Ccl7 protein was expressed in Escherichia coli.
Species	Rat
Source	E.coli
ProteinLength	74
Description	<p>Rat CCL7, belonging to the CC chemokine family, is also named as MCP-3, because the sequence comparison suggested that the rat CCL7 is a homologue of the human MCP-3 and is postulated the rat MCP-3. The MCP-3 protein family signals through CCR2 expect MCP-1 and possess cross-reacts across species. CCL7/MCP3 has chemotactic functions for monocytes and eosinophils, but not for neutrophils. Additionally, it can activated NK cells as well as CD4+ and CD8+ T lymphocytes. CCL7 was found to interact with MMP2.</p>
Form	Lyophilized from a 0.2µm filtered concentrated solution in 2 × PBS, pH 7.4.
Bio-activity	Fully biologically active when compared to standard. The biologically active determined by a chemotaxis bioassay using human monocytes is in a concentration range of 10-100 ng/ml.
Molecular Mass	Approximately 8.5 kDa, a single non-glycosylated polypeptide chain containing 74 amino acids.

 Tel: 1-631-559-9269 1-516-512-3133

 Email: info@creative-biomart.com  Fax: 1-631-938-8127

 45-1 Ramsey Road, Shirley, NY 11967, USA

AA Sequence	QPDGTNSSTCCYVKKQKIPKRNLKSYRKITSSRCPWEAVIFKTKKGMVEVCAEAHQK WVEEAIAYLDMKTSTPKP
Endotoxin	Less than 1 EU/g of rRtMCP-3/CCL7 as determined by LAL method.
Purity	>95% by SDS-PAGE and HPLC analysis.
Storage	Use a manual defrost freezer and avoid repeated freeze-thaw cycles. 12 months from date of receipt, -20 to -70 centigrade as supplied. 1 month, 2 to 8 centigrade under sterile conditions after reconstitution. 3 months, -20 to -70 centigrade under sterile conditions after reconstitution.
Reconstitution	We recommend that this vial be briefly centrifuged prior to opening to bring the contents to the bottom. Reconstitute in sterile distilled water or aqueous buffer containing 0.1 % BSA to a concentration of 0.1-1.0 mg/mL. Stock solutions should be apportioned into working aliquots and stored at ≤-20 centigrade. Further dilutions should be made in appropriate buffered solutions.

GENE INFORMATION

Gene Name	Ccl7
Official Symbol	Ccl7
Synonyms	CCL7; chemokine (C-C motif) ligand 7; C-C motif chemokine 7; MCP-3; chemotactic protein-3; small-inducible cytokine A7; monocyte chemotactic protein 3; monocyte chemoattractant protein 3;
Gene ID	287561
mRNA Refseq	NM_001007612

 Tel: 1-631-559-9269 1-516-512-3133

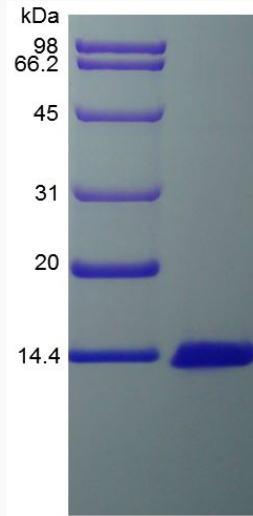
 Email: info@creative-biomart.com  Fax: 1-631-938-8127

 45-1 Ramsey Road, Shirley, NY 11967, USA

Protein Refseq NP_001007613

UniProt ID Q9QXY8

SDS-PAGE of Ccl7-635R



 Tel: 1-631-559-9269 1-516-512-3133

 Email: info@creative-biomart.com  Fax: 1-631-938-8127

 45-1 Ramsey Road, Shirley, NY 11967, USA