

Recombinant Mouse Ccl9 Protein (Gln22-Gln122)

Cat. No. Ccl9-5431M **Lot. No.** (See product label)

SPECIFICATION

Product Overview	Recombinant mouse Ccl9 (Gln22-Gln122) without tag was expressed in E. coli.
Species	Mouse
Source	E.coli
ProteinLength	Gln22-Gln122
Description	Predicted to enable CCR1 chemokine receptor binding activity; chemoattractant activity; and chemokine activity. Acts upstream of or within negative regulation of myoblast differentiation. Predicted to be located in extracellular region. Predicted to be active in extracellular space. Is expressed in several structures, including alimentary system; brain; eye; genitourinary system; and limb. Orthologous to several human genes including CCL23 (C-C motif chemokine ligand 23).
Form	Lyophilized powder/frozen liquid
Molecular Mass	11.11 kDa
Purity	> 90 % as determined by SDS-PAGE
Notes	For research use only.
Storage	Use a manual defrost freezer and avoid repeated freeze thaw cycles. Store at 2 to 8 centigrade for one week. Store at -20 to -80 centigrade for twelve months from the

 Tel: 1-631-559-9269 1-516-512-3133

 Email: info@creative-biomart.com  Fax: 1-631-938-8127

 45-1 Ramsey Road, Shirley, NY 11967, USA

date of receipt.

Storage Buffer Supplied as solution form in PBS or lyophilized from PBS.

Reconstitution Reconstitute in sterile water for a stock solution.

Shipping They are shipped out with dry ice/blue ice unless customers require otherwise.

GENE INFORMATION

Gene Name [Ccl9 C-C motif chemokine ligand 9 \[Mus musculus \(house mouse\) \]](#)

Official Symbol [Ccl9](#)

Synonyms Ccl9; C-C motif chemokine ligand 9; CCF18; MRP-2; Scya9; Scya10; C-C motif chemokine 9; MIP-1 gamma; chemokine (C-C motif) ligand 9; macrophage inflammatory protein 1-gamma; macrophage inflammatory protein-related protein 2; small inducible cytokine A10; small inducible cytokine A9

Gene ID [20308](#)

mRNA Refseq [NM_011338](#)

Protein Refseq [NP_035468](#)

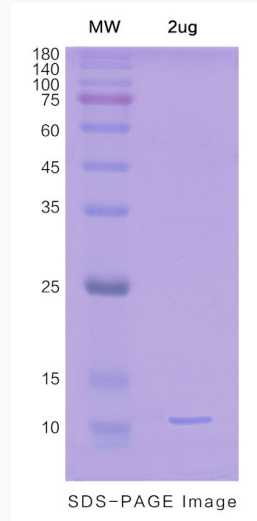
UniProt ID [P51670](#)

 Tel: 1-631-559-9269 1-516-512-3133

 Email: info@creative-biomart.com  Fax: 1-631-938-8127

 45-1 Ramsey Road, Shirley, NY 11967, USA

SDS-PAGE



 Tel: 1-631-559-9269 1-516-512-3133

 Email: info@creative-biomart.com  Fax: 1-631-938-8127

 45-1 Ramsey Road, Shirley, NY 11967, USA