

## Recombinant Mouse Ccl9 protein

Cat. No. Ccl9-619M Lot. No. (See product label)

### SPECIFICATION

<b>Product Overview</b>	Recombinant Mouse Ccl9 protein was expressed in Escherichia coli.
<b>Species</b>	Mouse
<b>Source</b>	E.coli
<b>ProteinLength</b>	101
<b>Description</b>	<p>Murine CCL9/10 is belonging to the CC chemokine family. It is encoded by the gene CCL9. MRP-2 (CCL9/10) was isolated from a murine macrophage cell line, RAW 264.7. MRP-2 shows a 51 % sequence identity at the protein level to MRP-1 (C10) and 46% identity to MIP-1-alpha (CCL3). The functional receptor for CCL9/10 has been identified as CCR1. In contrast, other CCR1 ligands, CCL3/MIP-1alpha and CCL5/RANTES are considered to be primary CCR1 ligands in inflammatory responses. CCL9 can activate osteoclasts suggesting an important role for it in bone resorption. Murine CCL9/10 is 75 % amino acid identical to rat CCL9/10.</p>
<b>Form</b>	Lyophilized from a 0.2µm filtered concentrated solution in PBS, pH 7.4.
<b>Bio-activity</b>	Fully biologically active when compared to standard. The biological activity determined by a chemotaxis bioassay using human neutrophils is in a concentration range of 0.1-10 ng/ml.
<b>Molecular Mass</b>	Approximately 11.6 kDa, a single non-glycosylated polypeptide chain containing 101 amino acids.

 Tel: 1-631-559-9269 1-516-512-3133

 Email: [info@creative-biomart.com](mailto:info@creative-biomart.com)  Fax: 1-631-938-8127

 45-1 Ramsey Road, Shirley, NY 11967, USA

<b>AA Sequence</b>	QITHATETKEVQSSLKAQQGLEIEMFHMGFQDSSDCCLSYNSRIQC SRFIGYFPTSG GCTRPGIIFISKRGFQVCANPSDRRVQRCIERLEQNSQPRTYKQ
<b>Endotoxin</b>	Less than 1 EU/μg of rMuMIP-1γ/CCL9/CCL10 as determined by LAL method.
<b>Purity</b>	>95% by SDS-PAGE and HPLC analysis.
<b>Storage</b>	Use a manual defrost freezer and avoid repeated freeze-thaw cycles. 12 months from date of receipt, -20 to -70 centigrade as supplied. 1 month, 2 to 8 centigrade under sterile conditions after reconstitution. 3 months, -20 to -70 centigrade under sterile conditions after reconstitution.
<b>Reconstitution</b>	We recommend that this vial be briefly centrifuged prior to opening to bring the contents to the bottom. Reconstitute in sterile distilled water or aqueous buffer containing 0.1 % BSA to a concentration of 0.1-1.0 mg/mL. Stock solutions should be apportioned into working aliquots and stored at ≤-20 centigrade. Further dilutions should be made in appropriate buffered solutions.

## GENE INFORMATION

<b>Gene Name</b>	Ccl9
<b>Official Symbol</b>	Ccl9
<b>Synonyms</b>	CCL9; chemokine (C-C motif) ligand 9; C-C motif chemokine 9; MIP-1 gamma; small inducible cytokine A9; small inducible cytokine A10; macrophage inflammatory protein 1-gamma; macrophage inflammatory protein-related protein 2; CCF18; MRP-2; Scya9; Scya10;
<b>Gene ID</b>	20308

 Tel: 1-631-559-9269 1-516-512-3133

 Email: [info@creative-biomart.com](mailto:info@creative-biomart.com)  Fax: 1-631-938-8127

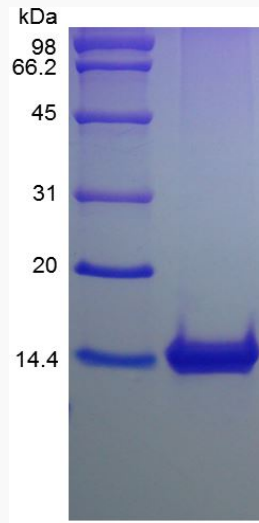
 45-1 Ramsey Road, Shirley, NY 11967, USA

mRNA Refseq [NM\\_011338](#)

Protein Refseq [NP\\_035468](#)

UniProt ID [P51670](#)

SDS-PAGE of Ccl9-  
619M



 Tel: 1-631-559-9269 1-516-512-3133

 Email: [info@creative-biomart.com](mailto:info@creative-biomart.com)  Fax: 1-631-938-8127

 45-1 Ramsey Road, Shirley, NY 11967, USA