

## Recombinant Mouse Ccn3 Protein (Ser26-Ile354), C-His tagged

**Cat. No.** Ccn3-6757M    **Lot. No.** (See product label)

### SPECIFICATION

<b>Product Overview</b>	Recombinant mouse Nov (Ser26-Ile354) fused with the C-terminal His tag was expressed in mammalian cells.
<b>Species</b>	Mouse
<b>Source</b>	Mammalian Cells
<b>ProteinLength</b>	Ser26-Ile354
<b>Description</b>	Predicted to enable Notch binding activity; heparin binding activity; and integrin binding activity. Involved in several processes, including bone regeneration; negative regulation of cell communication; and type B pancreatic cell proliferation. Located in extracellular space. Is expressed in several structures, including cardiovascular system; central nervous system; genitourinary system; gut; and sensory organ. Orthologous to human CCN3 (cellular communication network factor 3).
<b>Form</b>	Lyophilized powder/frozen liquid
<b>Molecular Mass</b>	36.19 kDa
<b>Purity</b>	> 90 % as determined by SDS-PAGE
<b>Notes</b>	For research use only.
<b>Storage</b>	Use a manual defrost freezer and avoid repeated freeze thaw cycles. Store at 2 to 8

 Tel: 1-631-559-9269    1-516-512-3133

 Email: [info@creative-biomart.com](mailto:info@creative-biomart.com)     Fax: 1-631-938-8127

 45-1 Ramsey Road, Shirley, NY 11967, USA

centigrade for one week. Store at -20 to -80 centigrade for twelve months from the date of receipt.

**Storage Buffer** Supplied as solution form in PBS or lyophilized from PBS.

**Reconstitution** Reconstitute in sterile water for a stock solution.

**Shipping** They are shipped out with dry ice/blue ice unless customers require otherwise.

## GENE INFORMATION

**Gene Name** [Ccn3 cellular communication network factor 3 \[ Mus musculus \(house mouse\) \]](#)

**Official Symbol** [Ccn3](#)

**Synonyms** Ccn3; cellular communication network factor 3; Nov; C130088N23Rik; CCN family member 3; nephroblastoma overexpressed; nephroblastoma-overexpressed gene protein homolog; novH; protein NOV homolog

**Gene ID** [18133](#)

**mRNA Refseq** [NM\\_010930](#)

**Protein Refseq** [NP\\_035060](#)

**UniProt ID** [Q64299](#)

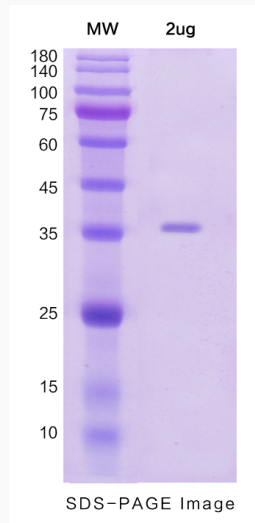
 Tel: 1-631-559-9269 1-516-512-3133

 Email: [info@creative-biomart.com](mailto:info@creative-biomart.com)  Fax: 1-631-938-8127

 45-1 Ramsey Road, Shirley, NY 11967, USA



SDS-PAGE



Tel: 1-631-559-9269 1-516-512-3133

Email: [info@creative-biomart.com](mailto:info@creative-biomart.com) Fax: 1-631-938-8127

45-1 Ramsey Road, Shirley, NY 11967, USA