

Recombinant Mouse Ccr1 Full Length Transmembrane protein, His-tagged

Cat. No. Ccr1-2945M **Lot. No.** (See product label)

SPECIFICATION

Product Overview	Recombinant Mouse Ccr1 protein(P51675)(1-355aa), fused with N-terminal His tag, was expressed in in vitro E. coli expression system.
Species	Mouse
Source	E.coli
ProteinLength	1-355aa
Form	If the delivery form is liquid, the default storage buffer is Tris/PBS-based buffer, 5%-50% glycerol. If the delivery form is lyophilized powder, the buffer before lyophilization is Tris/PBS-based buffer, 6% Trehalose, pH 8.0.
Molecular Mass	43.7 kDa
AA Sequence	MEISDFTEAYPTTTEFDYGDSTPCQKTAVRAFGAGLLPPLYSLVFIIGVVGNVLVILVL MQHRRQLQSMTSIYLFNLAVSDLVFLFTLPFWIDYKCLKDDWIFGDAMCKLLSGFYLLGL YSEIFFIILLTIDRYLAIVHAVFALRARTVTFGIITSITWALAILASMPALYFFKAQWETH RTCSPHFPYKSLKQWKRFQALKLNLLGLILPLLVMIIICYAGIIRILLRRPSEKKVKAVRLI FAITLLFLLWTPYNLSVFSVAFQDVLFTNQCEQSKQLDLAMQVTEVIAYTHCCVNPPII YVFVGERFWKYLRQLFQRHVAIPLAKWLPFLSVDQLERTSSISPSTGEHELSAGF
Purity	Greater than 85% as determined by SDS-PAGE.

 Tel: 1-631-559-9269 1-516-512-3133

 Email: info@creative-biomart.com  Fax: 1-631-938-8127

 45-1 Ramsey Road, Shirley, NY 11967, USA

Storage Store at -20°C/-80°C upon receipt, aliquoting is necessary for mutiple use. Avoid repeated freeze-thaw cycles.

Reconstitution Please reconstitute protein in deionized sterile water to a concentration of 0.1-1.0 mg/mL. We recommend to add 5-50% of glycerol (final concentration) and aliquot for long-term storage at -20°C/-80°C.

GENE INFORMATION

Gene Name [Ccr1 chemokine \(C-C motif\) receptor 1 \[Mus musculus \]](#)

Official Symbol [Ccr1](#)

Synonyms CCR1; chemokine (C-C motif) receptor 1; C-C chemokine receptor type 1; CCR-1; CC-CKR-1; RANTES-R; C-C CKR-1; MIP-1 alphaR; MIP-1alpha-R; MIP-1 alpha R; chemokine (C-C) receptor 1; macrophage inflammatory protein 1-alpha receptor; Cmkbr1; Mip-1a-R;

Gene ID [12768](#)

mRNA Refseq [NM_009912](#)

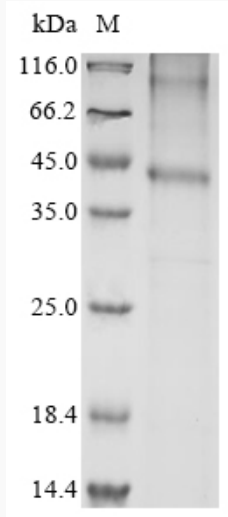
Protein Refseq [NP_034042](#)

 Tel: 1-631-559-9269 1-516-512-3133

 Email: info@creative-biomart.com  Fax: 1-631-938-8127

 45-1 Ramsey Road, Shirley, NY 11967, USA

SDS-PAGE



 Tel: 1-631-559-9269 1-516-512-3133

 Email: info@creative-biomart.com  Fax: 1-631-938-8127

 45-1 Ramsey Road, Shirley, NY 11967, USA