

Recombinant Mouse Ccr2 protein, His&Myc-tagged

Cat. No. Ccr2-4321M Lot. No. (See product label)

SPECIFICATION

Product Overview	Recombinant Mouse Ccr2 protein(P51683)(1-55aa), fused with N-terminal His tag and C-terminal Myc tag, was expressed in E.coli.
Species	Mouse
Source	E.coli
ProteinLength	1-55aa
Form	If the delivery form is liquid, the default storage buffer is Tris/PBS-based buffer, 5%-50% glycerol. If the delivery form is lyophilized powder, the buffer before lyophilization is Tris/PBS-based buffer, 6% Trehalose, pH 8.0.
Molecular Mass	13.6 kDa
Purity	Greater than 90% as determined by SDS-PAGE.
Storage	Store at -20°C/-80°C upon receipt, aliquoting is necessary for mutiple use. Avoid repeated freeze-thaw cycles.
Reconstitution	We recommend that this vial be briefly centrifuged prior to opening to bring the contents to the bottom. Please reconstitute protein in deionized sterile water to a concentration of 0.1-1.0 mg/mL. We recommend to add 5-50% of glycerol (final concentration) and aliquot for long-term storage at -20°C/-80°C.

 Tel: 1-631-559-9269 1-516-512-3133

 Email: info@creative-biomart.com  Fax: 1-631-938-8127

 45-1 Ramsey Road, Shirley, NY 11967, USA

AA Sequence MEDNNMLPQFIHGILSTSHSLFTRSILQELDEGATTPYDYDDGEPCHKTSVKQIGA

GENE INFORMATION

Gene Name [Ccr2 chemokine \(C-C motif\) receptor 2 \[Mus musculus \]](#)

Official Symbol [Ccr2](#)

Synonyms CCR2; chemokine (C-C motif) receptor 2; C-C chemokine receptor type 2; CCR-2; C-C CKR-2; MIP-1 alphaR; MCP-1 receptor; JE/FIC receptor; chemokine (C-C) receptor 2; chemoattractant protein-1 receptor; C-C CHEMOKINE RECEPTOR TYPE 2 (C-C CKR-2) (CC-CKR-2) (CCR-2) (CCR2) (JE/FIC RECEPTOR) (MCP-1 RECEPTOR); Ckr2; Ccr2a; Ccr2b; Ckr2a; Ckr2b; mJe-r; Cmkbr2; Cc-ckr-2;

Gene ID [12772](#)

mRNA Refseq [NM_009915](#)

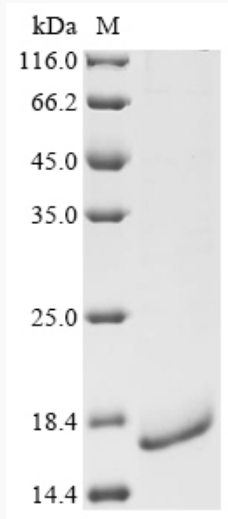
Protein Refseq [NP_034045](#)

 Tel: 1-631-559-9269 1-516-512-3133

 Email: info@creative-biomart.com  Fax: 1-631-938-8127

 45-1 Ramsey Road, Shirley, NY 11967, USA

SDS-PAGE



 Tel: 1-631-559-9269 1-516-512-3133

 Email: info@creative-biomart.com  Fax: 1-631-938-8127

 45-1 Ramsey Road, Shirley, NY 11967, USA