

Recombinant Mouse Ccr8 Full Length Transmembrane protein, His-tagged

Cat. No. Ccr8-2357M **Lot. No.** (See product label)

SPECIFICATION

Product Overview

Recombinant Mouse Ccr8 protein(P56484)(1-353aa), fused to N-terminal His tag, was expressed in E. coli.

Species

Mouse

Source

E.coli

ProteinLength

1-353aa

Form

If the delivery form is liquid, the default storage buffer is Tris/PBS-based buffer, 5%-50% glycerol.
If the delivery form is lyophilized powder, the buffer before lyophilization is Tris/PBS-based buffer, 6% Trehalose, pH 8.0.

Molecular Mass

42.8 kDa

AA Sequence

MDYTMENVTMTDYYPDFFTAPCDAEFLLRGSMPLYLAILYCVLFVVLGLLGNSLVILVL
VGCKKLRISITDIYLLNLAASDLLFVLSIPFQTHNLLDQWVFGTAMCKVVSGLYYIGFFS
SMFFITLMSVDRYLAIHVAVYAIKVRTASVGTALSLTVWLA AVTATIPLMVFYQVASED
GMLQCFQFYEEQSLRWKLFTHFEINALGLLL PFAILLFCYVRILQQLRGCLNHNHNRTRA
IKLVLTVVIVSLLFWVPFNVALFLTSLHDLHILDGCATRQRLALAIHVTEVISFTHCCVN
PVIYAFIGEKFKKHLMDVFQKSCSHIFLYLGRQMPV GALERQLSSNQRSSHSTLDDI
L

 Tel: 1-631-559-9269 1-516-512-3133

 Email: info@creative-biomart.com  Fax: 1-631-938-8127

 45-1 Ramsey Road, Shirley, NY 11967, USA

Purity	Greater than 85% as determined by SDS-PAGE.
Storage	Store at -20°C/-80°C upon receipt, aliquoting is necessary for mutiple use. Avoid repeated freeze-thaw cycles.
Reconstitution	Please reconstitute protein in deionized sterile water to a concentration of 0.1-1.0 mg/mL. We recommend to add 5-50% of glycerol (final concentration) and aliquot for long-term storage at -20°C/-80°C. Our default final concentration of glycerol is 50%.

GENE INFORMATION

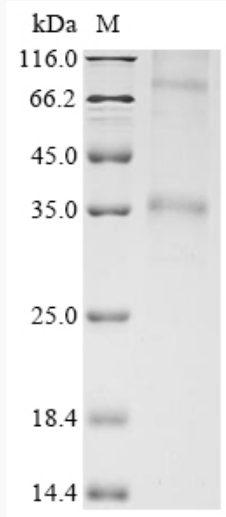
Gene Name	Ccr8 chemokine (C-C motif) receptor 8 [Mus musculus]
Official Symbol	Ccr8
Synonyms	CCR8; chemokine (C-C motif) receptor 8; C-C chemokine receptor type 8; CCR-8; CC-CKR-8; C-C CKR-8; chemokine (C-C) receptor 8; C-C motif chemokine receptor 8; mCCR8; Cmkbr8; MGC123958; MGC123959;
Gene ID	12776
mRNA Refseq	NM_007720
Protein Refseq	NP_031746

 Tel: 1-631-559-9269 1-516-512-3133

 Email: info@creative-biomart.com  Fax: 1-631-938-8127

 45-1 Ramsey Road, Shirley, NY 11967, USA

SDS-PAGE



 Tel: 1-631-559-9269 1-516-512-3133

 Email: info@creative-biomart.com  Fax: 1-631-938-8127

 45-1 Ramsey Road, Shirley, NY 11967, USA