

Recombinant Mouse Cd101 protein, His & GST-tagged

Cat. No. Cd101-6952M **Lot. No.** (See product label)

SPECIFICATION

Product Overview	Recombinant Mouse Cd101 aa. (Leu302~Thr531 (Accession # A8E0Y8)) fused with N-terminal His & GST tag was produced in E. coli cells.
Species	Mouse
Source	E.coli
ProteinLength	Leu302~Thr531
Form	Freeze-dried powder
Molecular Mass	Predicted Molecular Mass: 55.1kDa
Endotoxin	<1.0EU per 1ug (determined by the LAL method)
Purity	>95%
Characteristic	The isoelectric point is 8.4.
Applications	SDS-PAGE; WB; ELISA; IP
Stability	The thermal stability is described by the loss rate. The loss rate was determined by accelerated thermal degradation test, that is, incubate the protein at 37°C for 48h, and no obvious degradation and precipitation were observed. The loss rate is less than 5% within the expiration date under appropriate storage condition.

 Tel: 1-631-559-9269 1-516-512-3133

 Email: info@creative-biomart.com  Fax: 1-631-938-8127

 45-1 Ramsey Road, Shirley, NY 11967, USA

Storage	Avoid repeated freeze/thaw cycles. Store at 2-8°C for one month. Aliquot and store at -80°C for 12 months.
Storage buffer	Supplied as lyophilized form in PBS, pH7.4, containing 5% trehalose, 0.01% sarcosyl.
Reconstitution	Reconstitute in sterile PBS, pH7.2-pH7.4.

GENE INFORMATION

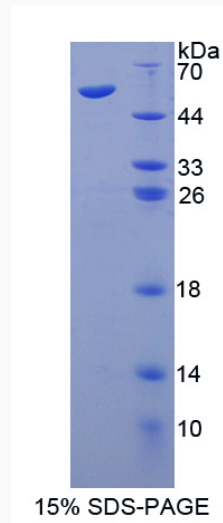
Gene Name	Cd101 CD101 antigen [<i>Mus musculus</i> (house mouse)]
Official Symbol	Cd101
Synonyms	Cd101; CD101 antigen; Gm734; Igsf2; Gm1016; EWI-101; immunoglobulin superfamily member 2; EWI immunoglobulin subfamily member EWI-101; glu-Trp-Ile EWI motif-containing protein 101; immunoglobulin superfamily, member 2; leukocyte surface protein
Gene ID	630146
mRNA Refseq	NM_001167906.1
Protein Refseq	NP_001161378.1
UniProt ID	A8E0Y8

 Tel: 1-631-559-9269 1-516-512-3133

 Email: info@creative-biomart.com  Fax: 1-631-938-8127

 45-1 Ramsey Road, Shirley, NY 11967, USA

SDS-PAGE



 Tel: 1-631-559-9269 1-516-512-3133

 Email: info@creative-biomart.com  Fax: 1-631-938-8127

 45-1 Ramsey Road, Shirley, NY 11967, USA