

Active Recombinant Mouse Cd200 Protein, His-tagged

Cat. No. Cd200-027M Lot. No. (See product label)

SPECIFICATION

Product Overview	Recombinant mouse CD200, fused to His-tag at C-terminus, was expressed in insect cell and purified by using conventional chromatography techniques.
Species	Mouse
Source	Insect cells
Description	Costimulates T-cell proliferation. May regulate myeloid cell activity in a variety of tissues.
Form	Liquid
Bio-activity	Measured by its binding ability in a functional ELISA with Mouse CD200 R1.
Molecular Mass	23.5 kDa
AA Sequence	QVEVVTQDERKALHTTASLRCSLKTSQEPLIVTWQKKKAVSPENMVTYSKTHGVVIQ PAYKDRINVTELGWLNSSITFWNTTLEDEGCYMCLFNTFGSQKVSQTACTLTLYVQPI VHLHYNFYFEDHLNITCSATARPAPAIWKGKGTGIENSTESHFHSNGTTSVTSILRVK DPKTQVGKEVICQVLYLGNVIDYKQSLDKG
Endotoxin	< 1 EU/μg of protein (determined by LAL method)
Purity	> 95% by SDS-PAGE

 Tel: 1-631-559-9269 1-516-512-3133

 Email: info@creative-biomart.com  Fax: 1-631-938-8127

 45-1 Ramsey Road, Shirley, NY 11967, USA

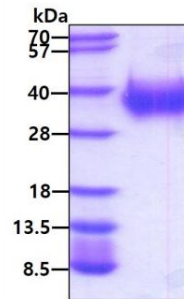
Applications	SDS-PAGE, Bioactivity
Storage	Can be stored at +2 to +8 centigrade for 1 week. For long term storage, aliquot and store at -20 to -106 centigrade. Avoid repeated freezing and thawing cycles.
Concentration	0.25 mg/mL (determined by absorbance at 280nm)
Storage Buffer	Phosphate-Buffered Saline (pH 7.4) containing 10% glycerol
GENE INFORMATION	
Gene Name	Cd200 CD200 antigen [<i>Mus musculus</i> (house mouse)]
Official Symbol	Cd200
Synonyms	Cd200; CD200 antigen; OX; Mox; OX2; Mox2; OX-2 membrane glycoprotein; MRC OX-2 antigen; antigen identified by monoclonal antibody MRC OX-2
Gene ID	17470
mRNA Refseq	NM_010818
Protein Refseq	NP_034948
UniProt ID	O54901

 Tel: 1-631-559-9269 1-516-512-3133

 Email: info@creative-biomart.com  Fax: 1-631-938-8127

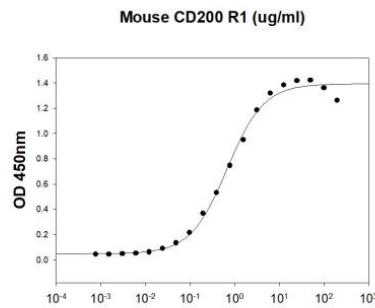
 45-1 Ramsey Road, Shirley, NY 11967, USA

SDS-PAGE



3 μ g by SDS-PAGE under reducing condition and visualized by coomassie blue stain

Biological Activity



Mouse CD200 is coated at 1 μ g/mL (100 μ L/well) can bind CD200 R1 in a Functional ELISA assay.

 Tel: 1-631-559-9269 1-516-512-3133

 Email: info@creative-biomart.com  Fax: 1-631-938-8127

 45-1 Ramsey Road, Shirley, NY 11967, USA