

Recombinant Mouse Cd200 protein(31-232aa), His&Myc-tagged

Cat. No. Cd200-392M **Lot. No.** (See product label)

SPECIFICATION

Product Overview	Recombinant Mouse Cd200 protein(O54901)(31-232aa), fused with N-terminal His and C-terminal Myc tag, was expressed in E. coli.
Species	Mouse
Source	E.coli
ProteinLength	31-232aa
Form	If the delivery form is liquid, the default storage buffer is Tris/PBS-based buffer, 5%-50% glycerol. If the delivery form is lyophilized powder, the buffer before lyophilization is Tris/PBS-based buffer, 6% Trehalose, pH 8.0.
Molecular Mass	29.8 kDa
Purity	Greater than 90% as determined by SDS-PAGE.
Storage	Store at -20°C/-80°C upon receipt, aliquoting is necessary for multiple use. Avoid repeated freeze-thaw cycles.
Reconstitution	We recommend that this vial be briefly centrifuged prior to opening to bring the contents to the bottom. Please reconstitute protein in deionized sterile water to a concentration of 0.1-1.0 mg/mL. We recommend to add 5-50% of glycerol (final concentration) and aliquot for long-term storage at -20°C/-80°C.

 Tel: 1-631-559-9269 1-516-512-3133

 Email: info@creative-biomart.com  Fax: 1-631-938-8127

 45-1 Ramsey Road, Shirley, NY 11967, USA



AA Sequence

QVEVVTQDERKALHTTASLRCSLKTSQEPLIVTWQKKKAVSPENMVTYSKTHGVVIQ
PAYKDRINVTELGLWNSSITFWNTTLEDEGCYMCLFNTFGSQKVSQTACLTLVQPI
VHLHYNFYFEDHLNITCSATARPAPAIWKGKTGTGIENSTESHFHSNGTTSVTSILRVK
DPKTQVGKEVICQVLYLGNVIDYKQSLDKG

GENE INFORMATION

Gene Name [Cd200 CD200 antigen \[Mus musculus \]](#)

Official Symbol [Cd200](#)

Synonyms CD200; CD200 antigen; OX-2 membrane glycoprotein; MRC OX-2 antigen; antigen identified by monoclonal MRC OX-2; OX2; Mox2;

Gene ID [17470](#)

mRNA Refseq [NM_010818](#)

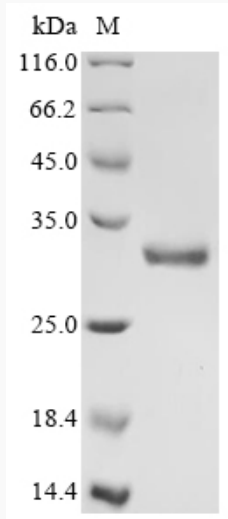
Protein Refseq [NP_034948](#)

Tel: 1-631-559-9269 1-516-512-3133

Email: info@creative-biomart.com Fax: 1-631-938-8127

45-1 Ramsey Road, Shirley, NY 11967, USA

SDS-PAGE



 Tel: 1-631-559-9269 1-516-512-3133

 Email: info@creative-biomart.com  Fax: 1-631-938-8127

 45-1 Ramsey Road, Shirley, NY 11967, USA