

Recombinant Rat Cd200 Protein, His-tagged

Cat. No. Cd200-659R **Lot. No.** (See product label)

SPECIFICATION

Product Overview	Recombinant Rat Cd200 Protein (Gln31-Gly232) with His tag was expressed in CHO.
Species	Rat
Source	CHO
ProteinLength	Gln31-Gly232
Description	Enables protein binding activity involved in heterotypic cell-cell adhesion. Involved in several processes, including negative regulation of interleukin-6 production; negative regulation of leukocyte migration; and negative regulation of neuroinflammatory response. Located in cell surface; neuron projection; and neuronal cell body. Orthologous to human CD200 (CD200 molecule).
Form	Freeze-dried powder
Molecular Mass	Predicted Molecular Mass: 24.1 kDa; Accurate Molecular Mass: \
Purity	> 95%
Applications	Positive Control; Immunogen; SDS-PAGE; WB.
Stability	The thermal stability is described by the loss rate. The loss rate was determined by accelerated thermal degradation test, that is, incubate the protein at 37 centigrade for 48h, and no obvious degradation and precipitation were observed. The loss rate is

 Tel: 1-631-559-9269 1-516-512-3133

 Email: info@creative-biomart.com  Fax: 1-631-938-8127

 45-1 Ramsey Road, Shirley, NY 11967, USA

less than 5% within the expiration date under appropriate storage condition.

Storage

Avoid repeated freeze/thaw cycles. Store at 2-8 centigrade for one month. Aliquot and store at -80 centigrade for 12 months.

Storage Buffer

PBS, pH7.4, containing 0.01% SKL, 1mM DTT, 5% Trehalose and Proclin300.

Reconstitution

Reconstitute in 10mM PBS (pH7.4) to a concentration of 0.1-1.0 mg/mL. Do not vortex.

GENE INFORMATION

Gene Name

Cd200 Cd200 molecule [*Rattus norvegicus* (Norway rat)]

Official Symbol

Cd200

Synonyms

CD200; Cd200 molecule; OX-2 membrane glycoprotein; Cd200 antigen; MRC OX-2 antigen; antigen identified by monoclonal MRC OX-2; Cell surface protein (thymocyte antigen identified by monoclonal MRC-OX2; cell surface protein (thymocyte antigen identified by monoclonal MRC-OX2); Mox2; Cspmo2; MRcox2; MGC108657;

Gene ID

24560

mRNA Refseq

NM_031518

Protein Refseq

NP_113706

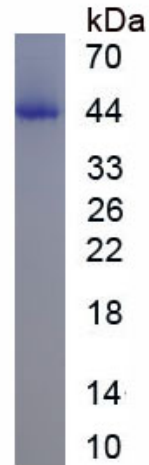
UniProt ID

A0A5D0

 Tel: 1-631-559-9269 1-516-512-3133

 Email: info@creative-biomart.com  Fax: 1-631-938-8127

 45-1 Ramsey Road, Shirley, NY 11967, USA



 Tel: 1-631-559-9269 1-516-512-3133

 Email: info@creative-biomart.com  Fax: 1-631-938-8127

 45-1 Ramsey Road, Shirley, NY 11967, USA