

## Recombinant Mouse Cd200r1 Protein, His-tagged

**Cat. No.** Cd200r1-661M    **Lot. No.** (See product label)

### SPECIFICATION

<b>Product Overview</b>	Recombinant Mouse Cd200r1 Protein (Thr26-Pro238) with His tag was expressed in E. coli.
<b>Species</b>	Mouse
<b>Source</b>	E.coli
<b>ProteinLength</b>	Thr26-Pro238
<b>Description</b>	Enables signaling receptor activity. Predicted to be involved in several processes, including negative regulation of interleukin-6 production; negative regulation of leukocyte migration; and negative regulation of neuroinflammatory response. Located in external side of plasma membrane. Is expressed in central nervous system; liver lobe; retina; and thymus primordium. Orthologous to several human genes including CD200R1 (CD200 receptor 1).
<b>Form</b>	Freeze-dried powder
<b>Molecular Mass</b>	Predicted Molecular Mass: 26.7 kDa; Accurate Molecular Mass: 33 kDa
<b>Purity</b>	> 90%
<b>Applications</b>	Positive Control; Immunogen; SDS-PAGE; WB.
<b>Stability</b>	The thermal stability is described by the loss rate. The loss rate was determined by

 Tel: 1-631-559-9269    1-516-512-3133

 Email: [info@creative-biomart.com](mailto:info@creative-biomart.com)     Fax: 1-631-938-8127

 45-1 Ramsey Road, Shirley, NY 11967, USA

accelerated thermal degradation test, that is, incubate the protein at 37 centigrade for 48h, and no obvious degradation and precipitation were observed. The loss rate is less than 5% within the expiration date under appropriate storage condition.

**Storage**

Avoid repeated freeze/thaw cycles. Store at 2-8 centigrade for one month. Aliquot and store at -80 centigrade for 12 months.

**Storage Buffer**

20mM Tris, 150mM NaCl, pH8.0, containing 1mM EDTA, 1mM DTT, 0.01% SKL, 5% Trehalose and Proclin300.

**Reconstitution**

Reconstitute in 20mM Tris, 150mM NaCl (pH8.0) to a concentration of 0.1-1.0 mg/mL. Do not vortex.

## GENE INFORMATION

**Gene Name**

Cd200r1 CD200 receptor 1 [ *Mus musculus* (house mouse) ]

**Official Symbol**

Cd200r1

**Synonyms**

CD200R1; CD200 receptor 1; cell surface glycoprotein CD200 receptor 1; Orexin receptor 2; CD200 cell surface glycoprotein receptor; cell surface glycoprotein OX2 receptor 1; antigen identified by monoclonal MRC OX-2 receptor; OX2R; Mox2r; CD200R;

**Gene ID**

57781

**mRNA Refseq**

NM\_021325

**Protein Refseq**

NP\_067300

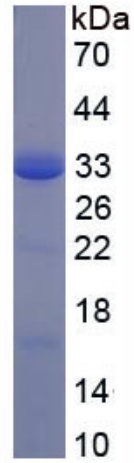
**UniProt ID**

Q9ES57

 Tel: 1-631-559-9269 1-516-512-3133

 Email: [info@creative-biomart.com](mailto:info@creative-biomart.com)  Fax: 1-631-938-8127

 45-1 Ramsey Road, Shirley, NY 11967, USA



 Tel: 1-631-559-9269 1-516-512-3133

 Email: [info@creative-biomart.com](mailto:info@creative-biomart.com)  Fax: 1-631-938-8127

 45-1 Ramsey Road, Shirley, NY 11967, USA