

## Recombinant Mouse Cd244 Protein (Gln20-Asn221), C-His tagged

Cat. No. Cd244-5720M Lot. No. (See product label)

### SPECIFICATION

<b>Product Overview</b>	Recombinant mouse CD244 (Gln20-Asn221) fused with the C-terminal His tag was expressed in mammalian cells.
<b>Species</b>	Mouse
<b>Source</b>	Mammalian Cells
<b>ProteinLength</b>	Gln20-Asn221
<b>Form</b>	Lyophilized powder/frozen liquid
<b>Molecular Mass</b>	22.33 kDa
<b>Purity</b>	> 90 % as determined by SDS-PAGE
<b>Notes</b>	For research use only.
<b>Storage</b>	Use a manual defrost freezer and avoid repeated freeze thaw cycles. Store at 2 to 8 centigrade for one week. Store at -20 to -80 centigrade for twelve months from the date of receipt.
<b>Storage Buffer</b>	Supplied as solution form in PBS or lyophilized from PBS.
<b>Reconstitution</b>	Reconstitute in sterile water for a stock solution.

 Tel: 1-631-559-9269 1-516-512-3133

 Email: [info@creative-biomart.com](mailto:info@creative-biomart.com)  Fax: 1-631-938-8127

 45-1 Ramsey Road, Shirley, NY 11967, USA

**Shipping**

They are shipped out with dry ice/blue ice unless customers require otherwise.

**GENE INFORMATION****Gene Name**Cd244 CD244 natural killer cell receptor 2B4 [ *Mus musculus* (house mouse) ]**Official Symbol**

Cd244

**Synonyms**

CD244; CD244 natural killer cell receptor 2B4; natural killer cell receptor 2B4; NK cell receptor 2B4; NK cell type I receptor protein 2B4; non MHC restricted killing associated; non-MHC restricted killing associated; 2B4; C9.1; Ly90; NAIL; Nmrk; NKR2B4; SLAMF4; F730046O15Rik;

**Gene ID**

18106

**mRNA Refseq**

NM\_018729

**Protein Refseq**

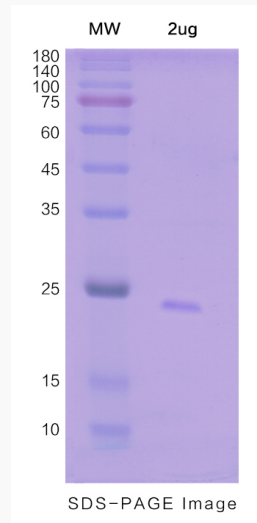
NP\_061199

**UniProt ID**

Q07763

 Tel: 1-631-559-9269 1-516-512-3133 Email: [info@creative-biomart.com](mailto:info@creative-biomart.com)  Fax: 1-631-938-8127 45-1 Ramsey Road, Shirley, NY 11967, USA

**SDS-PAGE**



 Tel: 1-631-559-9269 1-516-512-3133

 Email: [info@creative-biomart.com](mailto:info@creative-biomart.com)  Fax: 1-631-938-8127

 45-1 Ramsey Road, Shirley, NY 11967, USA