

## Recombinant Mouse Cd27 protein, mFc-tagged

Cat. No. Cd27-5654M Lot. No. (See product label)

### SPECIFICATION

<b>Product Overview</b>	Recombinant Mouse Cd27 protein(P41272-1)(Pro24-Arg182), fused with C-terminal mFc tag, was expressed in HEK293.
<b>Species</b>	Mouse
<b>Source</b>	HEK293
<b>ProteinLength</b>	Pro24-Arg182
<b>Tag</b>	C-mFc
<b>Form</b>	Lyophilized from 0.22µm filtered solution in PBS (pH 7.4). Normally 5% trehalose is added as protectant before lyophilization.
<b>Bio-activity</b>	Immobilized Mouse CD27, mFc Tag at 2µg/ml (100µl/Well) on the plate. Dose response curve for Mouse CD27 Ligand, hFc Tag with the EC50 of 34.0ng/ml determined by ELISA.
<b>Molecular Mass</b>	The protein has a predicted MW of 44.3 kDa. Due to glycosylation, the protein migrates to 60-70 kDa based on Tris-Bis PAGE result.
<b>Endotoxin</b>	Less than 1EU per µg by the LAL method.
<b>Purity</b>	> 95% as determined by Tris-Bis PAGE; > 95% as determined by HPLC

 Tel: 1-631-559-9269 1-516-512-3133

 Email: [info@creative-biomart.com](mailto:info@creative-biomart.com)  Fax: 1-631-938-8127

 45-1 Ramsey Road, Shirley, NY 11967, USA

**Storage** Reconstituted protein stable at -80°C for 12 months, 4°C for 1 week. Use a manual defrost freezer and avoid repeated freeze-thaw cycles.

**Reconstitution** Centrifuge tubes before opening. Reconstituting to a concentration more than 100 µg/ml is recommended. Dissolve the lyophilized protein in distilled water.

## GENE INFORMATION

**Gene Name** Cd27 CD27 antigen [ *Mus musculus* ]

**Official Symbol** Cd27

**Synonyms** CD27; CD27 antigen; CD antigen 27; CD27L receptor; T-cell activation antigen CD27; tumor necrosis factor receptor superfamily member 7; tumor necrosis factor receptor superfamily, member 7; S152; Tp55; Tnfrsf7;

**Gene ID** 21940

**mRNA Refseq** NM\_001033126

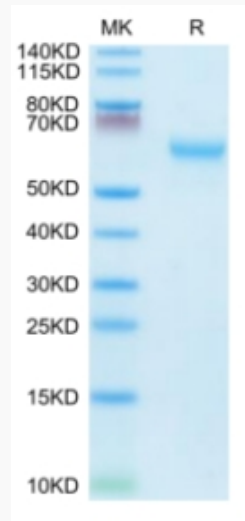
**Protein Refseq** NP\_001028298

 Tel: 1-631-559-9269 1-516-512-3133

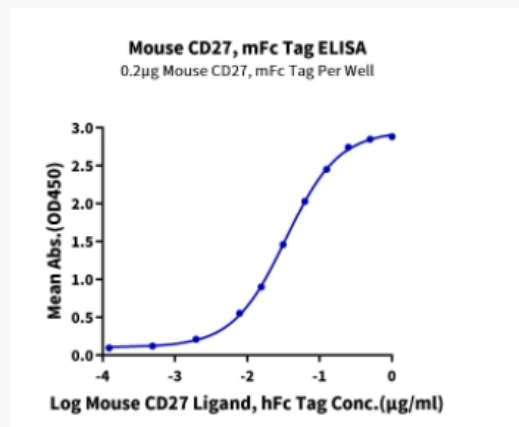
 Email: [info@creative-biomart.com](mailto:info@creative-biomart.com)  Fax: 1-631-938-8127

 45-1 Ramsey Road, Shirley, NY 11967, USA

**Tris-Bis PAGE**



**ELISA Data**



 Tel: 1-631-559-9269 1-516-512-3133

 Email: [info@creative-biomart.com](mailto:info@creative-biomart.com)  Fax: 1-631-938-8127

 45-1 Ramsey Road, Shirley, NY 11967, USA