

Recombinant Mouse Cd276 Protein (Val29-Phe244)

Cat. No. Cd276-5407M **Lot. No.** (See product label)

SPECIFICATION

Product Overview	Recombinant mouse CD276 (Val29-Phe244) without tag was expressed in mammalian cells.
Species	Mouse
Source	Mammalian Cells
ProteinLength	Val29-Phe244
Description	Enables identical protein binding activity and signaling receptor binding activity. Acts upstream of or within several processes, including positive regulation of osteoblast differentiation; regulation of T cell proliferation; and regulation of cytokine production. Located in external side of plasma membrane. Is expressed in several structures, including embryo endoderm; genitourinary system; hemolymphoid system; liver; and musculoskeletal system. Orthologous to human CD276 (CD276 molecule).
Form	Lyophilized powder/frozen liquid
Molecular Mass	23.76 kDa
Purity	> 90 % as determined by SDS-PAGE
Notes	For research use only.
Storage	Use a manual defrost freezer and avoid repeated freeze thaw cycles. Store at 2 to 8

 Tel: 1-631-559-9269 1-516-512-3133

 Email: info@creative-biomart.com  Fax: 1-631-938-8127

 45-1 Ramsey Road, Shirley, NY 11967, USA

centigrade for one week. Store at -20 to -80 centigrade for twelve months from the date of receipt.

Storage Buffer Supplied as solution form in PBS or lyophilized from PBS.

Reconstitution Reconstitute in sterile water for a stock solution.

Shipping They are shipped out with dry ice/blue ice unless customers require otherwise.

GENE INFORMATION

Gene Name Cd276 CD276 antigen [*Mus musculus* (house mouse)]

Official Symbol Cd276

Synonyms Cd276; CD276 antigen; B7h3; B7-H3; B7RP-2; 6030411F23Rik; CD276 antigen; B7 homolog 3; costimulatory molecule

Gene ID 102657

mRNA Refseq NM_133983

Protein Refseq NP_598744

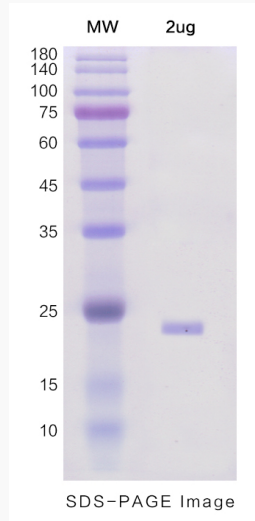
UniProt ID Q8VE98

 Tel: 1-631-559-9269 1-516-512-3133

 Email: info@creative-biomart.com  Fax: 1-631-938-8127

 45-1 Ramsey Road, Shirley, NY 11967, USA

SDS-PAGE



 Tel: 1-631-559-9269 1-516-512-3133

 Email: info@creative-biomart.com  Fax: 1-631-938-8127

 45-1 Ramsey Road, Shirley, NY 11967, USA