

Recombinant Mouse Cd28 Protein, His-tagged

Cat. No. Cd28-666M **Lot. No.** (See product label)

SPECIFICATION

Product Overview	Recombinant Mouse Cd28 Protein (Asn20-Leu150) with His tag was expressed in E. coli.
Species	Mouse
Source	E.coli
ProteinLength	Asn20-Leu150
Description	Enables protein kinase binding activity. Acts upstream of or within several processes, including positive regulation of immune response; positive regulation of intracellular signal transduction; and regulation of lymphocyte activation. Located in external side of plasma membrane and immunological synapse. Human ortholog(s) of this gene implicated in multiple sclerosis and type 1 diabetes mellitus. Orthologous to human CD28 (CD28 molecule).
Form	Freeze-dried powder
Molecular Mass	Predicted Molecular Mass: 18.7 kDa; Accurate Molecular Mass: 19 kDa
Purity	> 90%
Applications	Positive Control; Immunogen; SDS-PAGE; WB.
Stability	The thermal stability is described by the loss rate. The loss rate was determined by

 Tel: 1-631-559-9269 1-516-512-3133

 Email: info@creative-biomart.com  Fax: 1-631-938-8127

 45-1 Ramsey Road, Shirley, NY 11967, USA

accelerated thermal degradation test, that is, incubate the protein at 37 centigrade for 48h, and no obvious degradation and precipitation were observed. The loss rate is less than 5% within the expiration date under appropriate storage condition.

Storage

Avoid repeated freeze/thaw cycles. Store at 2-8 centigrade for one month. Aliquot and store at -80 centigrade for 12 months.

Storage Buffer

20mM Tris, 150mM NaCl, pH8.0, containing 1mM EDTA, 1mM DTT, 0.01% SKL, 5% Trehalose and Proclin300.

Reconstitution

Reconstitute in 20mM Tris, 150mM NaCl (pH8.0) to a concentration of 0.1-1.0 mg/mL. Do not vortex.

GENE INFORMATION

Gene Name

Cd28 CD28 antigen [*Mus musculus* (house mouse)]

Official Symbol

Cd28

Synonyms

CD28; CD28 antigen; T-cell-specific surface glycoprotein CD28;

Gene ID

12487

mRNA Refseq

NM_007642

Protein Refseq

NP_031668

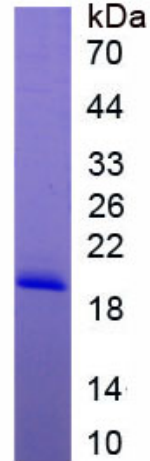
UniProt ID

P31041

 Tel: 1-631-559-9269 1-516-512-3133

 Email: info@creative-biomart.com  Fax: 1-631-938-8127

 45-1 Ramsey Road, Shirley, NY 11967, USA



Tel: 1-631-559-9269 1-516-512-3133

Email: info@creative-biomart.com Fax: 1-631-938-8127

45-1 Ramsey Road, Shirley, NY 11967, USA