

Recombinant Mouse Cd300c protein, GST-tagged

Cat. No. Cd300c-4533M Lot. No. (See product label)

SPECIFICATION

Product Overview	Recombinant Mouse Cd300c protein(A2A7V7)(22-188aa), fused with N-terminal GST tag, was expressed in E.coli.
Species	Mouse
Source	E.coli
ProteinLength	22-188aa
Form	If the delivery form is liquid, the default storage buffer is Tris/PBS-based buffer, 5%-50% glycerol. If the delivery form is lyophilized powder, the buffer before lyophilization is Tris/PBS-based buffer, 6% Trehalose, pH 8.0.
Molecular Mass	45.8 kDa
Purity	Greater than 85% as determined by SDS-PAGE.
Storage	Store at -20°C/-80°C upon receipt, aliquoting is necessary for mutiple use. Avoid repeated freeze-thaw cycles.
Reconstitution	We recommend that this vial be briefly centrifuged prior to opening to bring the contents to the bottom. Please reconstitute protein in deionized sterile water to a concentration of 0.1-1.0 mg/mL. We recommend to add 5-50% of glycerol (final concentration) and aliquot for long-term storage at -20°C/-80°C.

 Tel: 1-631-559-9269 1-516-512-3133

 Email: info@creative-biomart.com  Fax: 1-631-938-8127

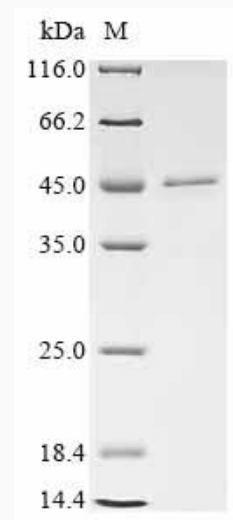
 45-1 Ramsey Road, Shirley, NY 11967, USA

AA Sequence HFPVRGPSTVTGTVGESLSVSCQYEEKLKTKKKIWCKWKS NVLCKDIVKTSASEEAR
 NGRVSIRDHPDNLFTFTVLTLENLTLEDAGTYMCMVDIGFFYDAYLQIDKSFKVEVFVVP
 GKPPFKGSRPGNGINILASPTSSAVHTQPNVTTDDTIPAPSPPELRSLLSSPH

GENE INFORMATION

Gene Name	Cd300c CD300C antigen [<i>Mus musculus</i>]
Official Symbol	Cd300c
Synonyms	CD300C; CD300C antigen; CMRF35-like molecule 6; CLM-6; CMRF-35-like molecule 6; CD300 antigen-like family member C; Clm6;
Gene ID	387565
mRNA Refseq	NM_199225
Protein Refseq	NP_954695

SDS-PAGE



Tel: 1-631-559-9269 1-516-512-3133

Email: info@creative-biomart.com Fax: 1-631-938-8127

45-1 Ramsey Road, Shirley, NY 11967, USA