

## Recombinant Mouse CD33 Antigen, Fc-tagged

**Cat. No.** Cd33-6889M    **Lot. No.** (See product label)

### SPECIFICATION

**Product Overview**      A DNA sequence encoding the extracellular domain of mouse Cd33 ( Met 1 - Glu 240 ) was fused with the Fc region of human IgG1 at the C-terminus. It comprises 465 amino acids and has a calculated molecular mass of 51.6 kDa.

**Species**      Mouse

**Source**      Human Cells

**ProteinLength**      465aa

**Description**      Mouse myeloid cell surface antigen Cd33 is a single-pass type I membrane protein which belongs to the immunoglobulin superfamily and SIGLEC (sialic acid binding Ig-like lectin) family. Cd33 contains 1 Ig-like C2-type (immunoglobulin-like) domain and one Ig-like V-type (immunoglobulin-like) domain.

**Predicted N Terminal**      Gln 17

**Form**      Lyophilized from sterile PBS, pH 7.4. Normally 5 % - 8 % trehalose and mannitol are added as protectants before lyophilization. Specific concentrations are included in the hardcopy of COA.

**Molecular Mass**      The secreted recombinant mouse Cd33 / Fc is a disulfide-linked homodimer. The reduced monomer comprises 465 amino acids and has a calculated molecular mass of 51.6 kDa. As a result of glycosylation, the apparent molecular mass of rm CD33 / Fc monomer is approximately 55 - 60 kDa in SDS-PAGE under reducing conditions.

 Tel: 1-631-559-9269    1-516-512-3133

 Email: [info@creative-biomart.com](mailto:info@creative-biomart.com)     Fax: 1-631-938-8127

 45-1 Ramsey Road, Shirley, NY 11967, USA



<b>Endotoxin</b>	1.0 eu/μg of the protein as determined by the lal
<b>Purity</b>	>90 % as determined by SDS-PAGE.
<b>Stability</b>	Samples are stable for up to twelve months from date of receipt at -70 °C.
<b>Storage</b>	Store it under sterile conditions at -70°C. It is recommended that the protein be aliquoted for optimal storage. Avoid repeated freeze-thaw cycles.

## GENE INFORMATION

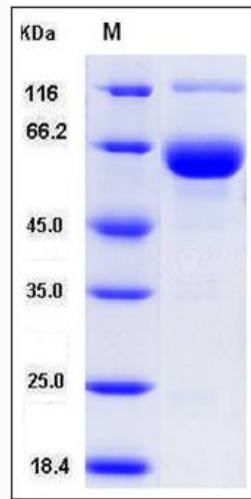
<b>Gene Name</b>	Cd33 CD33 antigen [ <i>Mus musculus</i> ]
<b>Official Symbol</b>	Cd33
<b>Synonyms</b>	CD33; CD33 antigen; myeloid cell surface antigen CD33; sialic acid-binding Ig-like lectin 3; gp67; Siglec-3;
<b>Gene ID</b>	12489
<b>mRNA Refseq</b>	NM_001111058
<b>Protein Refseq</b>	NP_001104528
<b>Pathway</b>	Hematopoietic cell lineage, organism-specific biosystem; Hematopoietic cell lineage, conserved biosystem;
<b>Function</b>	sugar binding;

Tel: 1-631-559-9269 1-516-512-3133

Email: [info@creative-biomart.com](mailto:info@creative-biomart.com) Fax: 1-631-938-8127

45-1 Ramsey Road, Shirley, NY 11967, USA

Cd33 protein



 Tel: 1-631-559-9269 1-516-512-3133

 Email: [info@creative-biomart.com](mailto:info@creative-biomart.com)  Fax: 1-631-938-8127

 45-1 Ramsey Road, Shirley, NY 11967, USA