

Recombinant Mouse Cd3e protein(23-108aa), His&Myc-tagged

Cat. No. Cd3e-2911M Lot. No. (See product label)

SPECIFICATION

Product Overview	Recombinant Mouse Cd3e protein(P22646)(23-108aa), fused with N-terminal His and C-terminal Myc tag, was expressed in E. coli.
Species	Mouse
Source	E.coli
ProteinLength	23-108aa
Form	If the delivery form is liquid, the default storage buffer is Tris/PBS-based buffer, 5%-50% glycerol. If the delivery form is lyophilized powder, the buffer before lyophilization is Tris/PBS-based buffer, 6% Trehalose, pH 8.0.
Molecular Mass	17.3 kDa
Purity	Greater than 90% as determined by SDS-PAGE.
Storage	Store at -20°C/-80°C upon receipt, aliquoting is necessary for mutiple use. Avoid repeated freeze-thaw cycles.
Reconstitution	We recommend that this vial be briefly centrifuged prior to opening to bring the contents to the bottom. Please reconstitute protein in deionized sterile water to a concentration of 0.1-1.0 mg/mL. We recommend to add 5-50% of glycerol (final concentration) and aliquot for long-term storage at -20°C/-80°C.

 Tel: 1-631-559-9269 1-516-512-3133

 Email: info@creative-biomart.com  Fax: 1-631-938-8127

 45-1 Ramsey Road, Shirley, NY 11967, USA

AA Sequence DAENIEYKVSISGTSVELTCPLDSDENLKWEKNGQELPQKHDKHLVLQDFSEVEDSG
YYVCYTPASNKNTYLYLKARVCEYCV EVD

GENE INFORMATION

Gene Name Cd3e CD3 antigen, epsilon polypeptide [*Mus musculus*]

Official Symbol Cd3e

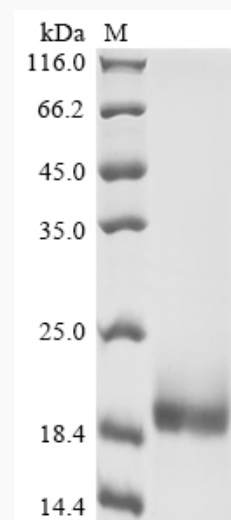
Synonyms CD3E; CD3 antigen, epsilon polypeptide; T-cell surface glycoprotein CD3 epsilon chain; T-cell surface antigen T3/Leu-4 epsilon chain; CD3; T3e; AI504783; CD3epsilon;

Gene ID 12501

mRNA Refseq NM_007648

Protein Refseq NP_031674

SDS-PAGE



Tel: 1-631-559-9269 1-516-512-3133

Email: info@creative-biomart.com Fax: 1-631-938-8127

45-1 Ramsey Road, Shirley, NY 11967, USA