

# Recombinant Mouse Cd40lg protein, monomeric hFc-tagged

Cat. No. Cd40lg-7854M Lot. No. (See product label)

## SPECIFICATION

<b>Product Overview</b>	Recombinant Mouse Cd40lg protein(P27548)(Met112-Leu260), fused with N-terminal monomeric hFc tag, was expressed in HEK293.
<b>Species</b>	Mouse
<b>Source</b>	HEK293
<b>ProteinLength</b>	Met112-Leu260
<b>Tag</b>	N-monomeric hFc
<b>Form</b>	Lyophilized from 0.22µm filtered solution in PBS, 200mM L-arginine (pH 7.4). Normally 8% trehalose is added as protectant before lyophilization.
<b>Bio-activity</b>	Immobilized Mouse CD40, His Tag at 2 µg/ml (100 µl/well) on the plate. Dose response curve for Mouse CD40 Ligand Trimer, hFc Tag with the EC50 of 3.5 ng/ml determined by ELISA.
<b>Molecular Mass</b>	The protein has a predicted MW of 75.6 kDa. Due to glycosylation, the protein migrates to 76-80 kDa based on Tris-Bis PAGE result.
<b>Endotoxin</b>	Less than 1EU per µg by the LAL method.
<b>Purity</b>	> 95% as determined by Tris-Bis PAGE

 Tel: 1-631-559-9269 1-516-512-3133

 Email: [info@creative-biomart.com](mailto:info@creative-biomart.com)  Fax: 1-631-938-8127

 45-1 Ramsey Road, Shirley, NY 11967, USA

**Storage** Reconstituted protein stable at -80°C for 12 months, 4°C for 1 week. Use a manual defrost freezer and avoid repeated freeze-thaw cycles.

**Reconstitution** Centrifuge tubes before opening. Reconstituting to a concentration more than 100 µg/ml is recommended. Dissolve the lyophilized protein in distilled water.

## GENE INFORMATION

**Gene Name** Cd40lg CD40 ligand [ *Mus musculus* ]

**Official Symbol** Cd40lg

**Synonyms** CD40LG; CD40 ligand; T-cell antigen Gp39; TNF-related activation protein; tumor necrosis factor ligand superfamily member 5; IGM; IMD3; Ly62; TRAP; gp39; CD154; Cd40l; HIGM1; Ly-62; T-BAM; CD40-L; Tnfsf5;

**Gene ID** 21947

**mRNA Refseq** NM\_011616

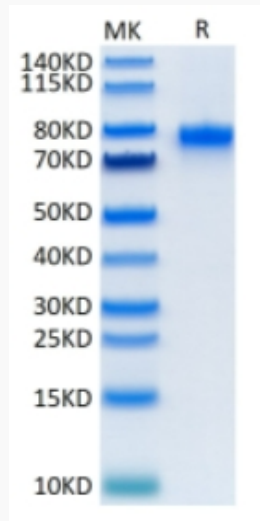
**Protein Refseq** NP\_035746

 Tel: 1-631-559-9269 1-516-512-3133

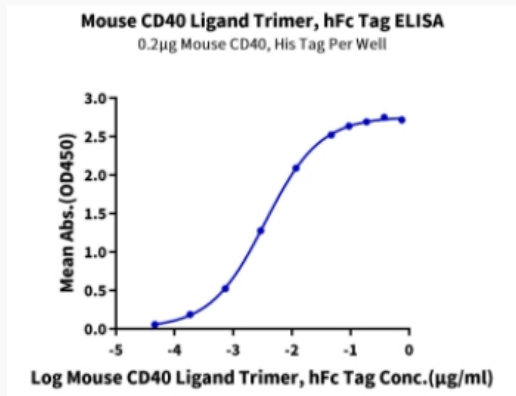
 Email: [info@creative-biomart.com](mailto:info@creative-biomart.com)  Fax: 1-631-938-8127

 45-1 Ramsey Road, Shirley, NY 11967, USA

**Tris-Bis PAGE**



**ELISA Data**



 Tel: 1-631-559-9269 1-516-512-3133

 Email: [info@creative-biomart.com](mailto:info@creative-biomart.com)  Fax: 1-631-938-8127

 45-1 Ramsey Road, Shirley, NY 11967, USA