

## Recombinant Rat Cd5 Protein, His-tagged

**Cat. No.** Cd5-688R    **Lot. No.** (See product label)

### SPECIFICATION

<b>Product Overview</b>	Recombinant Rat Cd5 Protein (Ser25-Pro368) with His tag was expressed in E. coli.
<b>Species</b>	Rat
<b>Source</b>	E.coli
<b>ProteinLength</b>	Ser25-Pro368
<b>Description</b>	Predicted to enable scavenger receptor activity. Predicted to be involved in T cell costimulation. Predicted to act upstream of or within apoptotic signaling pathway. Is spanning component of plasma membrane. Orthologous to human CD5 (CD5 molecule).
<b>Form</b>	Freeze-dried powder
<b>Molecular Mass</b>	Predicted Molecular Mass: 40.7 kDa; Accurate Molecular Mass: 43 kDa
<b>Purity</b>	> 90%
<b>Applications</b>	Positive Control; Immunogen; SDS-PAGE; WB.
<b>Stability</b>	The thermal stability is described by the loss rate. The loss rate was determined by accelerated thermal degradation test, that is, incubate the protein at 37 centigrade for 48h, and no obvious degradation and precipitation were observed. The loss rate is less than 5% within the expiration date under appropriate storage condition.

 Tel: 1-631-559-9269    1-516-512-3133

 Email: [info@creative-biomart.com](mailto:info@creative-biomart.com)     Fax: 1-631-938-8127

 45-1 Ramsey Road, Shirley, NY 11967, USA

<b>Storage</b>	Avoid repeated freeze/thaw cycles. Store at 2-8 centigrade for one month. Aliquot and store at -80 centigrade for 12 months.
<b>Storage Buffer</b>	20mM Tris, 150mM NaCl, pH8.0, containing 1mM EDTA, 1mM DTT, 0.01% SKL, 5% Trehalose and Proclin300.
<b>Reconstitution</b>	Reconstitute in 20mM Tris, 150mM NaCl (pH8.0) to a concentration of 0.1-1.0 mg/mL. Do not vortex.

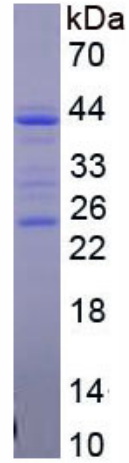
## GENE INFORMATION

<b>Gene Name</b>	Cd5 Cd5 molecule [ <i>Rattus norvegicus</i> (Norway rat) ]
<b>Official Symbol</b>	Cd5
<b>Synonyms</b>	CD5; Cd5 molecule; T-cell surface glycoprotein CD5; CD5 antigen; Lymphocyte antigen CD5; MGC114334;
<b>Gene ID</b>	54236
<b>mRNA Refseq</b>	NM_019295
<b>Protein Refseq</b>	NP_062168
<b>UniProt ID</b>	P51882

 Tel: 1-631-559-9269 1-516-512-3133

 Email: [info@creative-biomart.com](mailto:info@creative-biomart.com)  Fax: 1-631-938-8127

 45-1 Ramsey Road, Shirley, NY 11967, USA



Tel: 1-631-559-9269 1-516-512-3133

Email: [info@creative-biomart.com](mailto:info@creative-biomart.com) Fax: 1-631-938-8127

45-1 Ramsey Road, Shirley, NY 11967, USA