

Recombinant Mouse Cd55 Protein, His-tagged

Cat. No. Cd55-7191M Lot. No. (See product label)

SPECIFICATION

Product Overview	Recombinant Mouse Cd55 Protein with a His tag.
Species	Mouse
ProteinLength	35-362
Description	<p>This gene encodes an inhibitor of both the classical and the alternative pathways of complement activation. The encoded preproprotein undergoes post-translational processing to generate a mature polypeptide anchored to the plasma membrane via a glycosylphosphatidylinositol moiety. Erythrocytes from mice deficient in the encoded protein exhibit impaired regulation of complement activation resulting in enhanced complement deposition. Mice lacking the encoded protein exhibit enhanced susceptibility to experimentally induced myasthenia gravis. This gene is located adjacent to a closely related gene on chromosome 1.</p>
Form	Liquid
Molecular Mass	36.8 kDa
AA Sequence	<p>DCGPPPDIPNARPILGRHSKFAEQSKVAYSCNNGFKQVPDKSNIVVCLENGQWSSH ETFCEKSCVAPERLSFASLKKEYLNMNFFPVGTIVEYECRPGFRKQPPLPGKATCLE DLVWSPVAQFCKKKSCP NPKDLNNGHINIPTGILFGSEINFSCNPGYRLVGVSSSTFC SVTGNTVDWDDEFPVCTEIHCEPPKINNGIMRGESDSYTYSQVVVTYSCDKGFILVG NASIYCTVSKSDVGQWSSPPPRCIEKSKVPTKKPTINVPSTGTPSTPQKPTTESVPN PGDQPTPQKPSTVKVSATQHVPVTKTTVRHPIRTSTDKGEPNTGLEHHHHHHH</p>

 Tel: 1-631-559-9269 1-516-512-3133

 Email: info@creative-biomart.com  Fax: 1-631-938-8127

 45-1 Ramsey Road, Shirley, NY 11967, USA

Endotoxin	< 1.0 EU/μg of protein (determined by LAL method)
Purity	> 95 % by SDS-PAGE
Stability	Shelf life: one year from despatch.
Storage	Store undiluted at 2-8 centigrade for one week or (in aliquots) at -20 to -80 centigrade for longer. Avoid repeated freezing and thawing.
Concentration	0.5 mg/mL (determined by absorbance at 280nm)
Storage Buffer	Phosphate Buffered Saline (pH 7.4) containing 10 % glycerol.

GENE INFORMATION

Gene Name	Cd55 CD55 molecule, decay accelerating factor for complement [<i>Mus musculus</i> (house mouse)]
Official Symbol	Cd55
Synonyms	Cd55; CD55 molecule, decay accelerating factor for complement; Daf; Daf-; Daf1; GPI-; Daf-GPI; GPI-DAF; complement decay-accelerating factor, GPI-anchored; CD55 antigen; Cromer blood group; GPI anchor addition signal; complement-glycosylphosphatidylinositol; decay accelerating factor 1
Gene ID	13136
mRNA Refseq	NM_010016
Protein Refseq	NP_034146

 Tel: 1-631-559-9269 1-516-512-3133

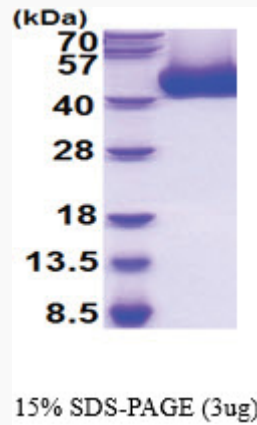
 Email: info@creative-biomart.com  Fax: 1-631-938-8127

 45-1 Ramsey Road, Shirley, NY 11967, USA

UniProt ID

Q61475

SDS-PAGE



 Tel: 1-631-559-9269 1-516-512-3133

 Email: info@creative-biomart.com  Fax: 1-631-938-8127

 45-1 Ramsey Road, Shirley, NY 11967, USA