

## Recombinant Mouse CD80 Protein (ECD), Fc-His-tagged(C-ter)

Cat. No. Cd80-36M Lot. No. (See product label)

### SPECIFICATION

<b>Product Overview</b>	Recombinant Mouse CD80 Protein (ECD) with Fc-His tag (C-ter) was expressed in HEK293.
<b>Species</b>	Mouse
<b>Source</b>	HEK293
<b>ProteinLength</b>	Val38-Lys245
<b>Description</b>	The protein encoded by this gene is a membrane receptor that is activated by the binding of CD28 or CTLA-4. The activated protein induces T-cell proliferation and cytokine production. This protein can act as a receptor for adenovirus subgroup B and may play a role in lupus neuropathy. [provided by RefSeq, Aug 2011]
<b>Form</b>	Powder
<b>Endotoxin</b>	Endotoxin level is less than 0.1 EU/μg of the protein, as determined by the LAL test.
<b>Purity</b>	> 97% (by SDS-PAGE)
<b>Applications</b>	Binding, SDS-PAGE
<b>Notes</b>	For laboratory research only, not for drug, diagnostic or other use.
<b>Storage</b>	Lyophilized protein should be stored at -20°C or -80°C. After reconstitution, aliquot

 Tel: 1-631-559-9269 1-516-512-3133

 Email: [info@creative-biomart.com](mailto:info@creative-biomart.com)  Fax: 1-631-938-8127

 45-1 Ramsey Road, Shirley, NY 11967, USA

and store at -20°C for up to one month, at 2-8°C for up to one week. Storage in frost free freezers is not recommended. Avoid repeated freeze/thaw cycles. Suggest spin the vial prior to opening.

**Storage Buffer** PBS (pH 7.4)

**Reconstitution** Reconstitute to a concentration of 0.1-0.5 mg/ml in sterile distilled water.

## GENE INFORMATION

**Gene Name** Cd80 CD80 antigen [ *Mus musculus* ]

**Official Symbol** Cd80

**Synonyms** CD80; CD80 antigen; T-lymphocyte activation antigen CD80; B7 protein; activation B7-1 antigen; B71; Ly53; TSA1; Cd28l; Ly-53; MIC17;

**Gene ID** 12519

**mRNA Refseq** NM\_009855

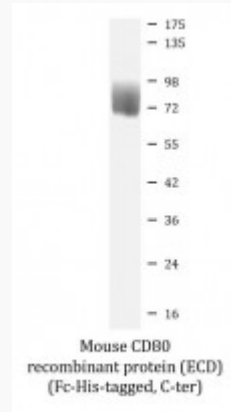
**Protein Refseq** NP\_033985

 Tel: 1-631-559-9269 1-516-512-3133

 Email: [info@creative-biomart.com](mailto:info@creative-biomart.com)  Fax: 1-631-938-8127

 45-1 Ramsey Road, Shirley, NY 11967, USA

**SDS-PAGE**



 Tel: 1-631-559-9269 1-516-512-3133

 Email: [info@creative-biomart.com](mailto:info@creative-biomart.com)  Fax: 1-631-938-8127

 45-1 Ramsey Road, Shirley, NY 11967, USA